



P/N 8640.600

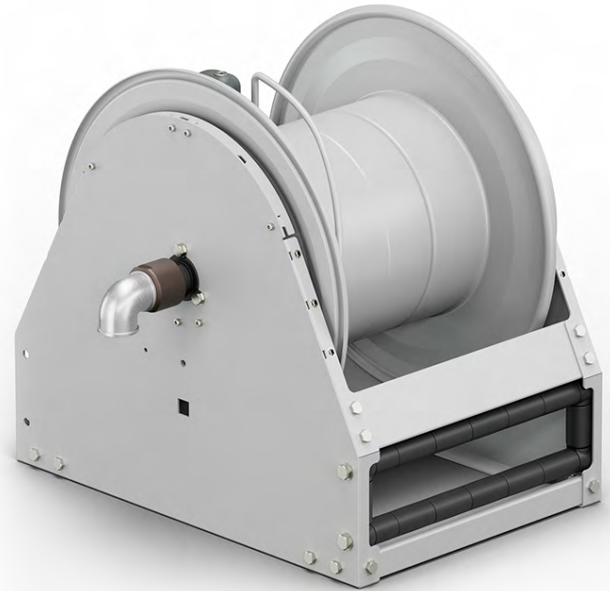
Automatic spring hose reel s. 640, for air-water, diesel, 20 bar, without hose. Inlet-outlet G 1" 1/2 (f)

AREAS OF USE

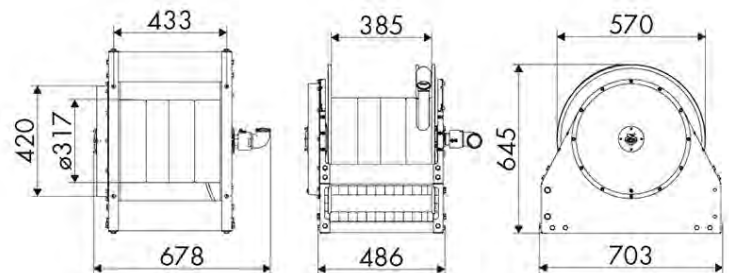
Agriculture, Building and road construction, Manufacturing industry, Mining industry, Lube trucks and transports, Shipping and offshore

FEATURES

Pressure	20 bar
Compatible fluids	air - water - diesel fuel
Swivel joint	brass
Seals	Viton®
Characteristic	fixed
Material	painted steel
Couplings	-
Hose	-
Ø and hose length	-
Inlet	G 1" 1/2 (f)
Outlet	G 1" 1/2 (f)
Reel flow path	brass - zinc plated steel



OVERALL DIMENSIONS (mm)



HOSE REELS CAPACITY

Ø 1" 1/4"	Ø 1" 1/2
20 m	15 m