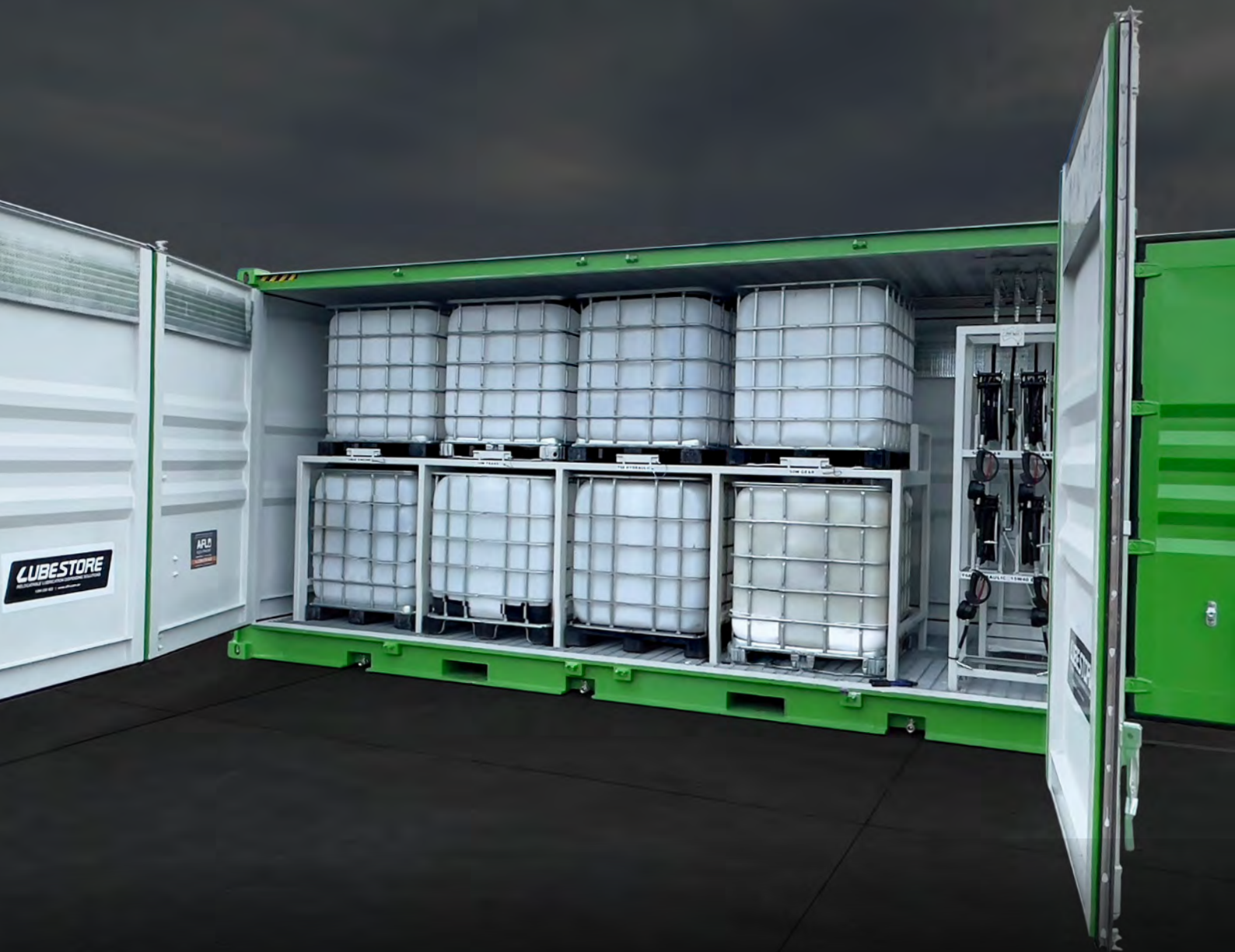


# A-FLO



## EQUIPMENT

**CUSTOMISED LUBESTORES**  
RELOCATABLE LUBRICATION DISPENSING SOLUTIONS



# MAKING EVERY DROP COUNT

ultraflo



GRACO

**A-FLO Equipment has over 30 years' experience designing and implementing fluid handling solutions across diverse market sectors, making us an ideal lubrication and refuelling partner of the mining industry.**

A-FLO specialises in fuel storage solutions, including self-bunded, containerised, and single-skin bulk diesel tanks and Lubestore container modules. Designed as a portable workshop, Lubestore ensures easy mobilise and demobilise capabilities, providing a flexible alternative to permanent infrastructure at a fraction of the cost.

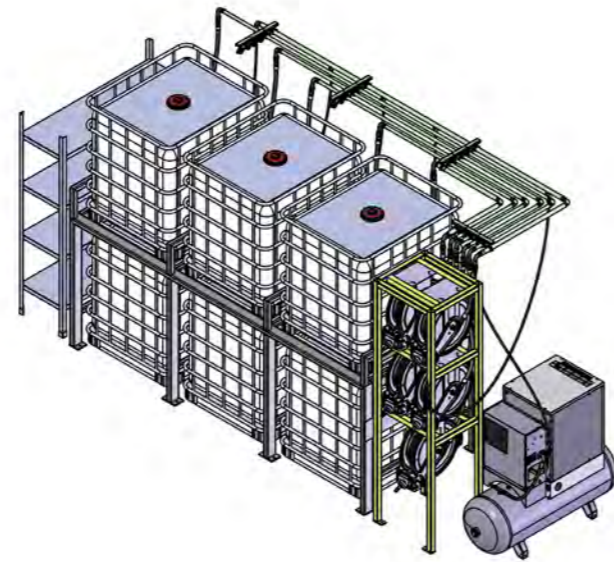


The customisable nature allows for tailored solutions to meet specific operational needs, including the integration of top-of-the-line equipment from Graco and RAASM.

With custom design and complete turn-key tanks and systems, A-FLO's team works with customers to deliver solutions for all requirements. Alongside its Lubestore solution, A-FLO also offers lube skids, fueltainers and diesel trailers.



OUR LUBESTORES ARE CUSTOM DESIGNED BY OUR ON-SITE ENGINEERING TEAM & BUILT BY OUR PRODUCTION TEAM



Complete coverage: delivering tailored solutions Australia-wide, covering a broad range of tank and system needs.



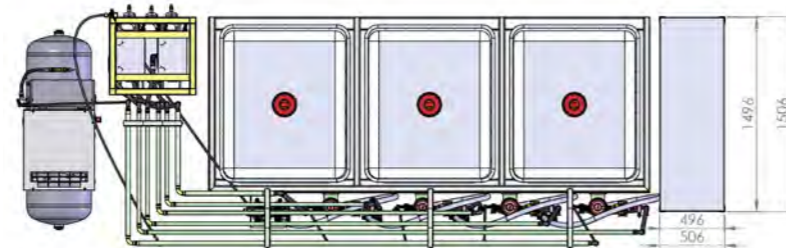
National coverage: ensuring accessibility and convenience for clients across every corner of Australia.



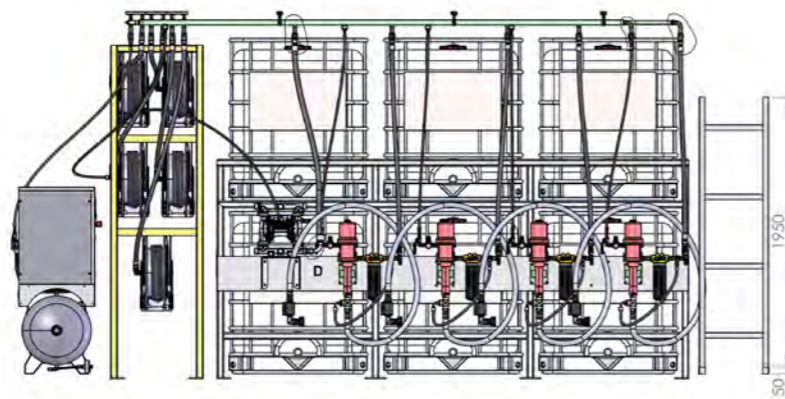
Stringent quality standards: every A-FLO product and installation is designed and manufactured to the demanding conditions of the Australian market.



Commitment to innovation, economy, and reliability with customised solutions for every project.



Family-operated and locally engrained: taking pride in our family-run ethos deeply embedded in local values.

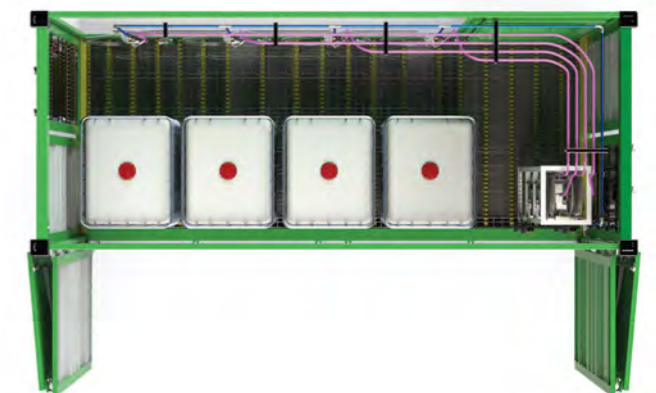
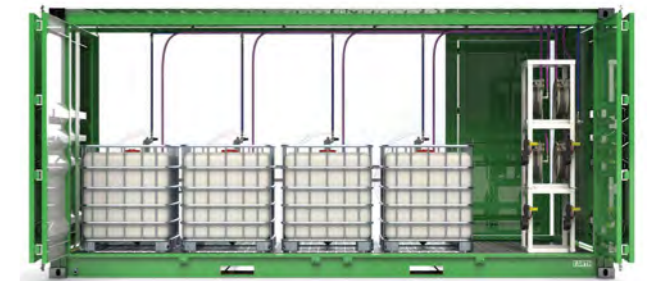


## Lubricant Dispensing Container Modules

Lubestore showcases the latest design in the new world of safety, efficiency, portability and compliance in the clean machinery maintenance. It has been fabricated to service the mining, construction and earth moving industries, developed for equipment longevity. Lubestore is built for high-levels of productivity; delivering improved machinery performance through optimising operating costs and protecting asset investment. The state of art design addresses inefficiencies and unsafe workplace practices in equipment maintenance.

### FEATURES & BENEFITS:

- Certified lifting lugs for portability.
- Certified lashing points for security.
- Heavy duty 2-pack polyurethane paint system.
- Fully bundled according to AS1940-2004 requirements for storing combustible liquids.
- All equipment mounted safely and securely with ease of access for maintenance.
- High quality equipment.
- Fully protected from external weather damage.
- Ventilation incorporated according to AS1940-2004 requirements for storing combustible liquids.
- All air flow into the storage and dispensing unit is rated to G2 as per AS1324.1.
- Built-in filtration system for incoming air supply.
- Heavy duty bi-fold doors which fold back 270 degrees for safe and easy access by forklifts.





# CUSTOMISED LUBESTORES



CASE STUDY

HI-TEC OILS

INDUSTRY



LUBESTORE EQUIPMENT SPECIFICATIONS:

4 x RAASM 5:1 Ratio Stub Pump

4 x RAASM Wall Mount Bracket

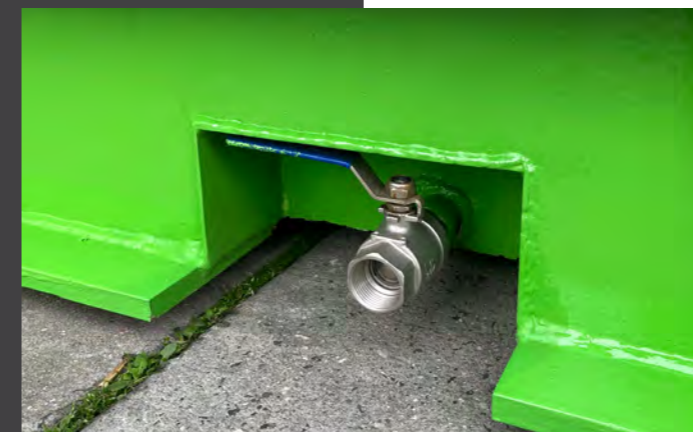
4 x 1/4" Air Regulator and Gauge

4 x IBC Bottom Suction Kit

4 x Oil Reels 15m x 1/2" ID Hose

4 x Digital Metered Oil Gun

Oil & Air Pipe Work



CASE STUDY

ROXBY HYDRAULICS

INDUSTRY



LUBESTORE EQUIPMENT SPECIFICATIONS:

- 4 x RAASM 5:1 High Flow Ratio Stub Pump
- 4 x RAASM Wall Mount Bracket
- 4 x 1/4" Air Regulator and Gauge
- 4 x IBC Bottom Suction Kit
- 4 x RAASM Oil Reels 15m x 3/4" ID Hose
- 4 x RAASM High Flow Digital Metered Oil Gun
- 6 x Donaldson Filtration Kits
- 3 x Fabricated large capacity waste oil drainer units



CASE STUDY

EAST COAST LUBES

INDUSTRY



LUBESTORE EQUIPMENT SPECIFICATIONS:

2 x RAASM 5:1 Ratio Stub Pump

2 x RAASM Wall Mount Bracket

2 x 1/4" Air Regulator and Gauge

2 x IBC Bottom Suction Kit

2 x Oil Reels 15m x 1/2" ID Hose

2 x Digital Metered Oil Gun

1 x 1/4" Air Regulator and Gauge

1 x RAASM 1" Diaphragm Aluminium Pump 170L/min

1 x RAASM Waste Oil Reel - 10m x 1" Hose

1 x 3 Phase Compressor

Oil & Air Pipe Work



CASE STUDY

AJL MECHANICAL  
(TRUGANINA &  
WEBB DOCK)

INDUSTRY



Mechanical  
Workshop

TRUGANINA

LUBESTORE EQUIPMENT  
SPECIFICATIONS:

4 x RAASM 5:1 Ratio Stub Pump

4 x RAASM Wall Mount Bracket

4 x 1/4" Air Regulator and Gauge

4 x IBC Bottom Suction Kit

Oil & Air Pipe Work

WEBB DOCK

LUBESTORE EQUIPMENT  
SPECIFICATIONS:

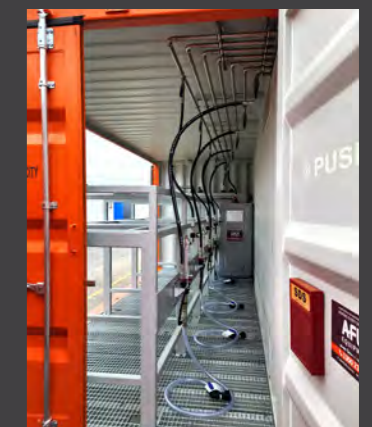
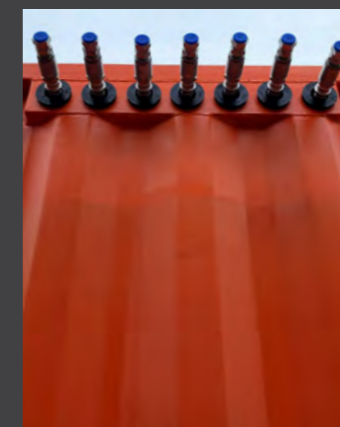
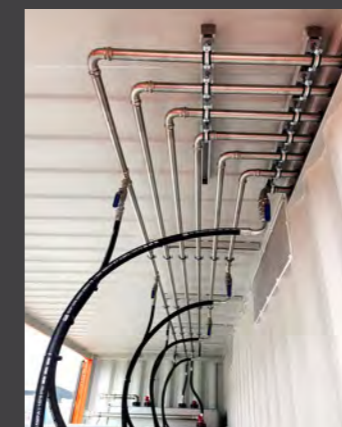
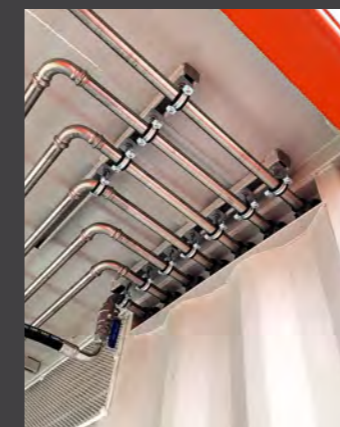
6 x RAASM 5:1 High Flow Pump

6 x RAASM Wall Mount Bracket

6 x 1/4" Air Regulator and Gauge

6 x IBC Bottom Suction Kit

Oil & Air Pipe Work





CASE STUDY  
**CIVMEC**

INDUSTRY



LUBESTORE EQUIPMENT SPECIFICATIONS:

2 x RAASM 9:1 Ratio High Flow Stub Pump

2 x RAASM Wall Mount Bracket

1 x Coolant Diaphragm Pump

4 x Graco Pneumatic Operated Hose Reels

Remote Tank Fill Control Station equipped with one-way valves and high level alarms

Lighting with On/Off Switch

Oil & Coolant Filtration

Oil, Coolant & Air Pipe Work



CUSTOM LUBESTORES

# HAVE A SPECIAL REQUIREMENT? ASK THE A-FLO TEAM FOR A SOLUTION!

With our in-house engineering team, we design custom built Lubestores to suit your site demands whilst staying compliant to standards. From concept to completion, we fabricate, assemble and test to ensure the system is ready to go when it arrives on site.



IN-HOUSE ENGINEERING



COMPLETE CUSTOMISATION



STANDARDS COMPLIANT





For more information, call our team  
or scan the QR code to visit our website



Scan to enquire now



**MAKING EVERY DROP COUNT**