

A-FLO

EQUIPMENT

2025 GENERAL RANGE CATALOGUE



MAKING EVERY DROP COUNT

ultraflo



OilSafe



GRACO

TABLE OF CONTENTS

OIL EQUIPMENT & ACCESSORIES	3-12	ADBLUE EQUIPMENT & ACCESSORIES	35-39
ULTRAFLO Hand Operated Oil Pumps	4	Rotary Drum Pumps	36
ULTRAFLO Spring Operated Oil Pumps	4	Gravity Feed Kits	36
ULTRAFLO Lever Action Oil Drum Pumps	4	Pumps & Kits	36 - 37
ULTRAFLO Standard Rotary Barrel Pumps	4	Nozzles	37-38
ULTRAFLO Heavy Duty Rotary Barrel Pumps	4	Flow Meters	38
EZI-Action Drum Pumps	5	Accessories	38-39
Level Gauges	5	Hose Reels	38-39
Air Operated Oil Pumps	5	Poly Tanks	39
Oil Distribution Kits	5-6	Level Indicators & Alarms	39
RAASM IBC Kits	6	AIR & WATER EQUIPMENT	40-42
RAASM Diaphragm Pumps	6	Mini Sprayers	41
Oil Reels	6-7	Rotary Pumps	41
Oil Control Guns	7	Water Valves	41
Oil Transfer Accessories	8	Hose Reels	41-42
Waste Oil Drainers	9	SPECIALTY REELS	43
Oil Filter Crushers	10	RAASM Air & Water Reels	43
Oil Equipment Accessories	10-11	RAASM 240V Electric Cable Reels	43
Oil Distribution Kits	12	WORKSHOP EQUIPMENT & ACCESSORIES	44-46
GREASE EQUIPMENT & ACCESSORIES	13-24	Trolleys	45
Hand Operated Grease Guns	14	Dollies	45
Hand Air Operated Grease Guns	14	Spill Pallets	45
Hand Operated Bulk Grease Pumps	15	Liquid Adhesives	46
Air Operated Grease Pump Kits	15-16	Drum Wrenches	46
Grease Gun Couplers & Flex Hoses	16	Drum Cradles	46
Grease Nipples	17	Spill Kits	46
Grease Gun Accessories	17-18		
Grease Gun & Swivels	18		
Hose Reels	18		
Auto Lubrication Systems & Fittings	18-23		
Air Operated Pump Kits	24		
DIESEL EQUIPMENT & ACCESSORIES	25-34		
ULTRAFLO Rotary Drum Pumps	26		
Refuelling Pumps & Kits	26-27		
Transfer Pumps	27		
Diesel Flow Meters	28		
Hose Reels	29		
Fuel Nozzles & Swivels	29 - 30		
Fuel Tank Fittings & Accessories	30-31		
Bowsers & Fuel Management Systems	31-32		
Petrol Driven & Diesel Driven Transfer Pumps	32		
Filters	32-33		
Level Indicators	33		
Fuel Gloves	33		
Diesel Tanks	33		
Polycubes	34		

Bulky Item* Products labelled as Bulky Items are subject to additional freight charges

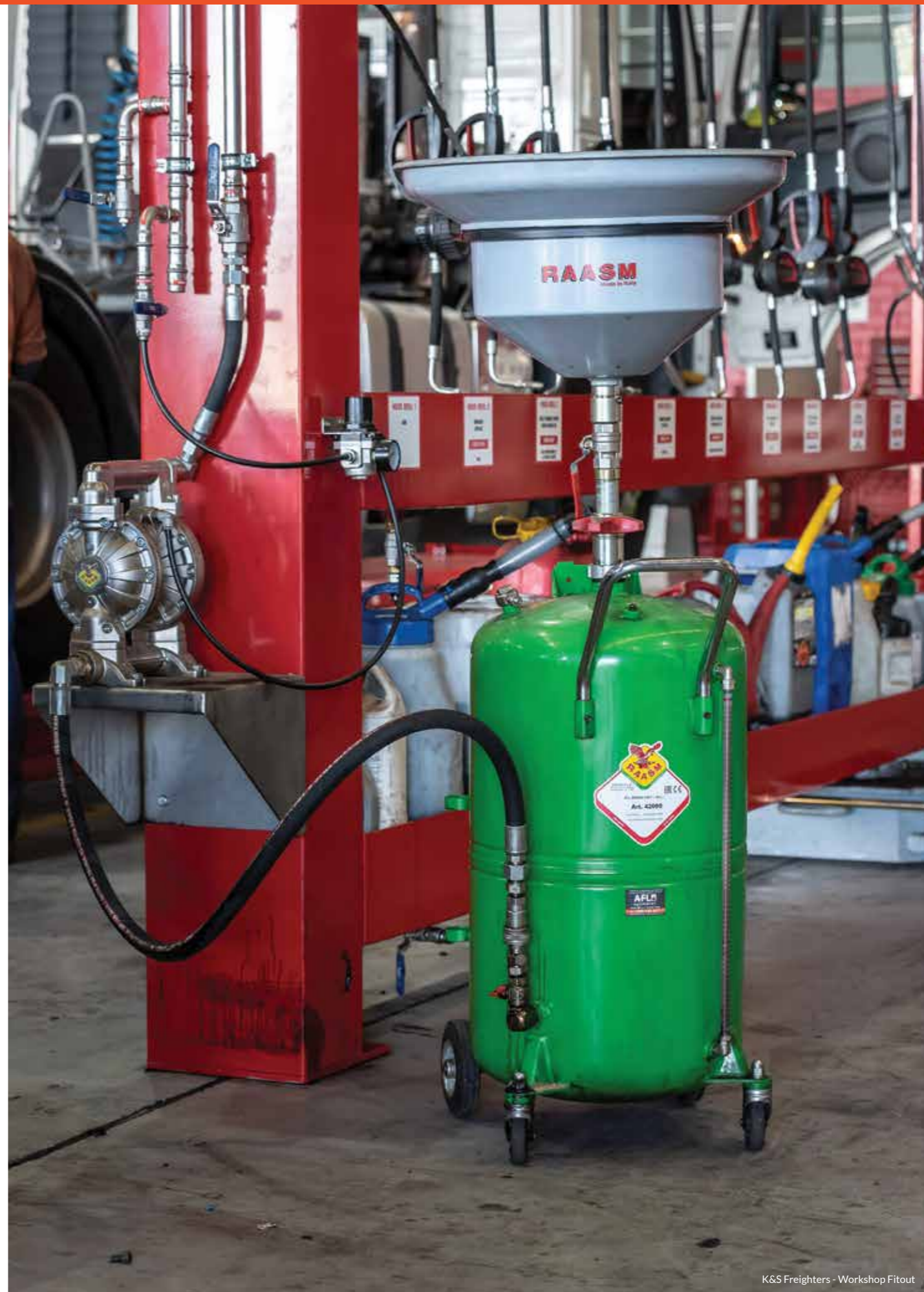


SHOP ONLINE

Scan the QR code, or visit aflo.com.au/login

DISCLAIMER: Although every care is taken to ensure accuracy & completeness in compiling this data, no liability can be accepted by A-FLO Equipment Pty Ltd for damage or loss caused by any errors or omissions in the information given, either directly or indirectly. Suitability of products referred to in this catalogue is the customers sole responsibility. Always refer to technical data to confirm suitability which is available on request from A-FLO Equipment Pty Ltd. E & O.E.

Version date: March 2025



ULTRAFLO 

Hand Operated 20L Oil Pump

- Easy Downstroke Displacement
- High Quality Components to ensure smooth pump action
- Telescopic Extension
- Approx. 14 strokes per litre
- Ideal pump for the transfer of engine, gear, diff & hydraulic oils



- AF-AP-1335**
20L Oil Pump without Hose
- AF-AP-1336B**
20L Oil Pump with Hose
- AF-AP-1337B**
20L Oil Pump with hose & 7 Drum Adaptor
- AF-AP-1338**
20L ATF Pump with Hose

ULTRAFLO 

Hand Operated 60L Oil Pump

- Easy Downstroke Displacement
- High Quality Components to ensure smooth pump action
- Telescopic Extension
- Approx. 14 strokes per litre
- Ideal pump for the transfer of engine, gear, diff & hydraulic oils



- AF-AP-1324**
60L Oil Pump without Hose
- AF-AP-1325**
60L Oil Pump with Hose
- AF-AP-1328**
60L ATF Pump with Hose

ULTRAFLO 

Spring Operated Oil Pump

- Spring Operated Pump with Lever Action Oil Control Valve
- 1.5m of Anti Kink Hose
- Provides an Economical, Efficient solution for mechanics to perform oil changes rapidly



- AF-AP-520H**
20L Oil Pump with Hose
- AF-AP-560H**
60L Oil Pump with Hose

ULTRAFLO 

Lever Action Oil Drum Pump

- Lightweight aluminium construction
- Approx. 3 strokes per litre
- Telescopic suction pipe
- 2" bung thread
- Suitable for 60L or 205L drums



- AF-AP-1316**
60-205L Lever Action Oil Pump

ULTRAFLO 

Standard Rotary Barrel Pump

- Solid cast iron construction
- Approx. 3 revolutions per litre
- 3 piece steel suction pipe & 2" bung adaptor
- Suitable for most motor oils & diesel
- Not recommended for petrol or gear oil



- AF-AP-2220**
205L Rotary Oil Pump
- AF-AP-2220H**
205L Rotary Oil Pump, Hose, Nozzle

ULTRAFLO 

Heavy Duty Rotary Barrel Pump

- Solid aluminium construction
- Approx. 3 revolutions per litre
- 3 piece steel suction pipe & 2" bung adaptor
- Suitable for petrol, diesel & motor oils



- AF-AP-1321**
HD 205L Rotary Oil Pump
- AF-AP-1321H**
HD 205L Rotary Oil Pump, Hose, Nozzle


Ezi-Action 

Drum Pump

- Output per stroke 20L 160mL
- Output per stroke 205L & 1000L 400mL
- Delivers on the up & down stroke
- Superior chemical resistance & anti-corrosion technology
- The only serviceable hand pump in the world, which acts to extend its lifespan
- Not suitable for solvent based products



- AF-EZ-25/5**
Ezi-Action 25L Drum Pump
- AF-EZ-205/550**
Ezi-Action 205L Drum Pump
- AF-EZ-1000/220**
Ezi-Action 1000L IBC Drum Pump with 4 Adaptors

RAASM 

1:1 Ratio Pump

- Flow Rates: up to 40 LPM
- Air inlet 1/4" BSP(f)
- Fluid Outlet: 3/4" BSP(f)
- Ideal for low viscosity transfer of fluids such as oil, waste oil, antifreeze & coolant



- AF-RA-33071**
RAASM 1:1 Ratio Stub Pump
- AF-RA-33073**
RAASM 1:1 Ratio 205L Drum Pump

ULTRAFLO 

Oil Drum Level Gauge

- Unique mechanical measuring gauge showing the fluid level in a 205L Drum
- Fits the standard 3/4" bung opening
- Suitable for oil, diesel, petrol, water, coolant, ATF, waste oil & some chemicals
- Allows for easy & simple stock keeping
- Made in Europe



- AF-FG-205**
205L Drum Level Gauge

RAASM 

3:1 Ratio Pump

- Flow Rate: up to 14 LPM
- Air inlet 1/4" BSP(f)
- Fluid Outlet: 1/2" BSP(f)
- For medium size workshops which may involve multiple hose reels with manual & metered guns



- AF-RA-35161**
RAASM 3:1 Ratio Stub Pump
- AF-RA-35196**
RAASM 3:1 Ratio 205L Drum Pump

RAASM 

5:1 Ratio Pump

- Flow Rate: up to 18 LPM
- Air inlet 1/4" BSP(f)
- Fluid Outlet: 1/2" BSP(f)
- For large size workshops which may involve multiple hose reels with manual & metered guns



- AF-RA-36061**
RAASM 5:1 Ratio Stub Pump
- AF-RA-36096**
RAASM 5:1 Ratio 205L Drum Pump

RAASM 

205L Oil Distribution Kit

- RAASM 3:1 or 5:1 Ratio Drum Pump
- 4m Hose Kit
- Manual or Metered Oil Control Gun
- 1/4" Air Regulator



- AF-OA205K1**
3:1 Manual Oil Distribution Kit
- AF-OA205K2**
5:1 Manual Oil Distribution Kit
- AF-OA205K3**
3:1 Metered Oil Distribution Kit
- AF-OA205K4**
5:1 Metered Oil Distribution Kit

RAASM
205L Mobile Oil Distribution Kit

- Mobile Trolley Kit
- 3:1 or 5:1 Ratio Pump
- 4m x 1/2" Distribution Hose
- Manual or Metered Oil Control Gun
- Note: 205L drum not included



Bulky Item*

AF-OAMTK1
3:1 Mobile Trolley Kit Manual Gun

AF-OAMTK2
5:1 Mobile Trolley Kit Manual Gun

AF-OAMTK3
3:1 Mobile Trolley Kit Metered Gun

AF-OAMTK4
5:1 Mobile Trolley Kit Metered Gun

RAASM
205L Mobile Oil Distribution Kit with Hose Reel

- Mobile Trolley Kit
- 3:1 or 5:1 Ratio Pump
- 10m x 1/2" Hose Reel
- Manual or Metered Oil Control Gun
- Note: 205L drum not included



Bulky Item*

AF-OAMTKR1
3:1 Mobile Trolley Kit with Hose Reel Manual Gun

AF-OAMTKR2
5:1 Mobile Trolley Kit with Hose Reel Manual Gun

AF-OAMTKR3
3:1 Mobile Trolley Kit with Hose Reel Metered Gun

AF-OAMTKR4
5:1 Mobile Trolley Kit with Hose Reel Metered Gun

RAASM
430 Series Oil Reels

- Can be roof, wall or bench mounted
- Equipped with 0.6m connection hose
- 1/2" BSP (f) inlet & 1/2" BSP (m) outlet connection
- Pressure rating: 150Bar
- Carbon steel swivel



AF-RA-8430.401
RAASM 430 Series Oil Reel 10m x 1/2" ID Hose

AF-RA-8430.402
RAASM 430 Series Oil Reel 15m x 1/2" ID Hose

RAASM
Manual Oil Gun

- Aluminum & cast alloy control valves for engine & gear oils including a high flow non drip nozzle
- Max. pressure: 1500PSI
- 1/2" BSP (f) swivel
- Flow Rates: up to 40 LPM



AF-RA-38022
RAASM Manual Oil Gun, Flexible Outlet

RAASM
Side Mounted IBC Kit

- RAASM 3:1 or 5:1 Ratio Pump
- Front Mount Bracket
- 4m x 1/2" Oil Delivery Hose
- Manual or Metered Oil Control Gun
- IBC Suction Kit with adaptor
- Note: IBC not included



AF-OAIBCS1
RAASM 3:1 Ratio IBC Kit with Manual Gun

AF-OAIBCS2
RAASM 5:1 Ratio IBC Kit with Manual Gun

AF-OAIBCS3
RAASM 3:1 Ratio IBC Kit with Metered Gun

AF-OAIBCS4
RAASM 5:1 Ratio IBC Kit with Metered Gun

RAASM
Top Mounted IBC Kit

- RAASM 3:1 or 5:1 Ratio Pump
- IBC Top Mount Bracket
- 10m x 1/2" Hose Reel
- Manual or Metered Oil Control Gun
- Optional extra: Drip Tray
- Note: IBC not included



AF-OAIBCTR1
RAASM 3:1 Ratio IBC Kit with Manual Gun

AF-OAIBCTR2
RAASM 5:1 Ratio IBC Kit with Manual Gun

AF-OAIBCTR3
RAASM 3:1 Ratio IBC Kit with Metered Gun

AF-OAIBCTR4
RAASM 5:1 Ratio IBC Kit with Metered Gun

PIUSI
K40 Mechanical Metered Oil Gun

- Easy to reset
- No calibration required
- Partial & full totaliser
- Non-resettable totaliser
- Bursting pressure: 210 Bar
- Max flow rate: 30 LPM
- Max pressure: 70 Bar (994 PSI)
- 1/2" (f) BSP Swivel inlet
- ±1% Accuracy



AF-FP-973020
K40 Mechanical Metered Gun, Flexible Spout

RAASM
Digital Metered Oil Gun

- 1/2" Inlet swivel joint with filter
- Flexible extension with semi-automatic nozzle
- Premium oil gun with totaliser & Non-resettable total
- Suitable for flow rates up to 40 LPM



AF-RA-37758
RAASM Digital Metered Oil Gun, Flexible Outlet

RAASM
Diaphragm Pumps

- Exceptional quality & performance
- Self-priming
- 10 year warranty
- Suitable for oil, waste oil, coolant & diesel



AF-RA-3C1/16111NHH
RAASM 3/4" Series Aluminium Pump 70 LPM

AF-RA-3C1/26111NHH
RAASM 1" Series Aluminium Pump 170 LPM

RAASM
440 Series Oil Reels

- Unique smooth & trouble-free operation
- Equipped with 0.6m connection hose
- Bracket enables easy installation (option of swivel or fixed)
- In position, it can freely turn 55° left & right
- 1/2" BSP (f) inlet & 1/2" BSP (m) outlet connection
- Pressure rating: 150Bar



AF-RA-9440.401
RAASM 440 Series Oil Reel 10m x 1/2" ID Hose

AF-RA-9440.402
RAASM 440 Series Oil Reel 15m x 1/2" ID Hose

ULTRAFLO
Metered Oil Control Gun

- Flow Rate: 1-30 LPM
- 1/2" BSP (f) Swivel
- ±0.5% Accuracy
- Battery Powered CR123A
- Manufactured in Germany
- Totaliser & resettable total
- Flexible outlet



AF-A-102111B
ULTRAFLO Metered Oil Control Gun, Flexible Outlet

ULTRAFLO
Preset Electronic Metered Oil Gun

- Pre-select: up to 999L
- Two programmable preset volumes
- Large easy to read display
- ±0.5% Accuracy
- Flow Rate: 1-30 LPM
- 1/2" BSP (f) inlet
- Flexible outlet



AF-A-102109B
ULTRAFLO Electronic Preset Meter, Flexible Outlet

ULTRAFLO
Multi-Purpose Bottle Pump

- 1L capacity, 500mm long PVC hose & spout
- Ideal for topping up difficult to access oiling points in the workshop or garage
- Self-contained preventing oil contamination whilst not in use
- Applications: agricultural, earthmoving, industrial, mining, transport, workshops & service garages



AF-AP-8100
1L Multi-Purpose Bottle Pump

ULTRAFLO
Oil Bottle

- Available in 1L Multi-Purpose Oil Bottles
- Re-usable oil bottle provides environmentally friendly means of dispensing oil
- Non-breakable impact resistant materials
- Weights & measures approved
- Comes with pourer & cap or can be purchased separately
- Available in Red, Black & Green



- AF-OB-1000-BLK**
1L Multi-Purpose Oil Bottle (Black)
- AF-OB-1000-RED**
1L Multi-Purpose Oil Bottle (Red)
- AF-OB-1000-GRE**
1L Multi-Purpose Oil Bottle (Green)

ULTRAFLO
Manual Waste Oil Extractor

- 6.5L capacity
- Supplied with 3 suction probes (5.9mm, 6.9mm & 9.9mm OD)
- Simple hand pump creates suction to extract the fluid



AF-AP-MW0E6.5
6.5L Manual Waste Oil Extractor

ULTRAFLO
Manual Oil Suction Gun

- 500cc capacity
- Ideal for the draining & filling of diffs, gear boxes & engine blocks
- 2 year Warranty



AF-AP-5010
ULTRAFLO Manual Oil Suction Gun

ULTRAFLO
Oil Measuring Jug

- Plastic measuring jug
- Flexible delivery spout
- Hinged protection lid
- Makes topping up of fluids easy & convenient



- AF-AP-2348**
1L Measuring Bottle with Flexible Outlet
- AF-AP-3348**
2L Measuring Bottle with Flexible Outlet
- AF-AP-4348**
3L Measuring Bottle with Flexible Outlet
- AF-AP-5348**
5L Measuring Bottle with Flexible Outlet

OILSAFE
5L Drum with Stumpy Spout

- Encourages clean, safe, organized & efficient practices
- Prevents contaminants from getting into the oil
- Complete with a 5L Oilsafe Drum, Stumpy Spout
- 10 colours available



- AF-OS-1010055**
5L Oil Jug with Stumpy Spout

RAASM
Mobile Waste Oil Drainer

- Anti-splash screen filter
- Removable tool tray
- Available in 65L, 80L & 90L capacity
- Drain bowl capacity of 15L
- Level Indicator with scale in litres & gallons



- AF-RA-42065**
65L Mobile Waste Oil Drainer
- AF-RA-42085**
80L Mobile Waste Oil Drainer
- AF-RA-42090**
90L Mobile Waste Oil Drainer

RAASM
Mobile Waste Oil Drainer & Extractor

- Anti-splash screen filter
- Removable tool tray
- Available in 65L, 90L capacity
- Drain bowl capacity of 15L
- Level Indicator in litres & gallons
- Supplied with 6 probes



- AF-RA-44060**
65L Mobile Combination Oil Suction & Drainer Unit
- AF-RA-44090**
90L Mobile Combination Oil Suction & Drainer Unit

OILSAFE
10L Drum with Hand Pump

- Encourages clean, safe, organized & efficient practices
- Prevents contaminants from getting into the oil
- Complete with a 10L Oilsafe Drum, utility lid & hand pump
- Hand pump ideal for hard to reach places & pumping applications like gearboxes
- 10 colours available



AF-OS-101010P
10L Oil Jug with Utility Lid & Hand Pump

ULTRAFLO
Polyethylene Funnel

- Made of high density polyethylene
- Suitable for all oils & fuels
- High flow rate
- Easy to clean & maintain



- AF-AP-7238**
1.3L Capacity Polyethylene Funnel - 160mm
- AF-AP-8238**
2L Capacity Polyethylene Funnel - 195mm
- AF-AP-9238**
3L Capacity Polyethylene Funnel - 235mm
- AF-AP-0238**
3.2L Capacity Polyethylene Funnel - 250mm
- AF-AP-5338**
4L Polyethylene Chemical & Oil Resistant

RAASM
Low Level Floor Waste Oil Drainer

- Wheel mounted floor waste oil drainers suitable for gravity draining of engine, gearbox & diff oils from all vehicles
- Anti-splash screen which can be used as a support for draining oil filters
- Ideal for a busy workshop environment



- AF-RA-42069**
RAASM Heavy Duty 50L Low Level Drainer
- AF-RA-42072**
RAASM Heavy Duty 95L Low Level Drainer
- AF-RA-42075**
RAASM Heavy Duty 150L Low Level Drainer

ULTRAFLO
Low Level Floor Waste Oil Drainer

- Wheel mounted floor waste oil drainers suitable for gravity draining of engine, gearbox & diff oils from all vehicles
- Anti-splash screen which can be used as a support for draining oil filters
- Ideal for a busy workshop environment



- AF-AP-5427**
ULTRAFLO Standard 68L Low Level Drainer
- AF-AP-6427**
ULTRAFLO Standard 95L Low Level Drainer

GRAY
Automotive Oil Filter Crusher

- Extracts up to 95% of used oil from the filter
- Interlocking feature prevents door from opening until the ram is fully retracted
- 100% Air operated - ensures maximum efficiency for the crushing of the oil filter
- Mounting stand included



Bulky Item*

AF-GM-QP-50
GRAY Automotive Oil Filter Crusher

GRAY
Oil Filter Crusher

- Extracts up to 95% of used oil from the filter
- Interlocking feature prevents door from opening until the ram is fully retracted
- 100% Air operated - ensures maximum efficiency for the crushing of the oil filter
- Mounting stand included



Bulky Item*

AF-GM-QP-160
GRAY Air Operated Filter Crusher

RAASM
4-Way Evacuation Valve

- 4-Directional Control Valve used to simplify the filling & emptying of tanks
- Simplifies installation by eliminating need for multiple valves
- Unrestricted flow, no pressure or volume loss
- Two position tank fill & emptying control
- Provide a professional look, reduces pipework & installation time



AF-RA-38131
RAASM 1" BSP (f) 4-Way Evacuation Valve

AF-RA-38132
RAASM 1 1/2" BSP (f) 4-Way Evacuation Valve

RAASM
Oil Bar

- Tap closes automatically when lever is released
- Oil Dispensing Bar for up to 3 products
- Digital meter not included



AF-RA-37690
RAASM Oil Bar with 1 Tap

AF-RA-37689
RAASM Oil Bar with 2 Tap

AF-RA-37688
RAASM Oil Bar with 3 Tap

AF-RA-37692
RAASM Extra Valve Tap

ULTRAFLO
Inline Digital Meter

- Robust aluminium construction
- Easy to read & resettable
- 2 year average battery life (battery CR123A)
- Flow Rates: up to 30 LPM
- Max. Pressure: 100 bar
- Accuracy: ± 0.5% of reading



AF-A-102100B
ULTRAFLO 1/2" Inline Digital Oil Meter

RAASM
Oil Dispensing Valve

- The valve is mounted directly onto the pump outlet
- To be used for filling oil jugs & bottles
- Oil Dispensing Valve only - 3/4" connection thread



AF-RA-37683
Oil Dispensing Valve - 3/4" Connection Thread

A-FLO
Air Regulator

- Supply clean & compressed air to equipment
- Maintain steady outlet pressure
- Die Cast Aluminium



AF-PS-REG-02
1/4" Air Regulator Gauge

AF-PS-REG-04
1/2" Air Regulator Gauge

AF-PS-FRE-02
1/4" Air Filter Regulator & Gauge

AF-PS-FRE-04
1/2" Air Filter Regulator & Gauge

AF-PS-FRL-02
1/4" Air Filter Regulator & Lubricator

AF-PS-FRL-04
1/2" Air Filter Regulator & Lubricator

A-FLO
High Level Oil Tank Alarm

- Suitable for steel or plastic tanks
- Suitable for oil, diesel & water
- High power alarm sounder 97dB at 1M
- Flashing light on top of unit
- Mute button stops the sounder & light still flashes
- Float switch supplied with 5m cable
- 2 year battery life, if tested weekly with no alarms



AF-HFE-HLA001
A-FLO High Level Diesel/Oil Alarm

A-FLO
Inline Pressure Relief Valve

- Adjustable between 5-50Bar (73-725 PSI)
- M/F hydraulic connections inlet & outlet
- Non-directional (flow either direction)
- Drain connection 1/4" BSP (f) - 8mm hose tail included



AF-ST-PRV12
1/2" Pressure Relief Valve Body & Cartridge

A-FLO
Unitanks Self Bunded Oil/Diesel Tanks

- Complete with 4 entry ports, a level gauge & a leak detection sensor between the inner & outer skin
- Blow-moulded, high density polyethylene inner tank
- Forkliftable
- Base clamp brackets included



Bulky Item*

AF-EM-7620
620L Unitank (750L x 690W x 1651H)

AF-EM-7381
750L Unitank (1000L x 760W x 1370H)

AF-EM-7382
1000L Unitank (1100L x 705W x 1610H)

AF-EM-7539
1500L Unitank (1650L x 755W x 1870H)

Custom Made New Oil Tanks

A-FLO's Heavy Duty Bulk Oil Tanks provide an excellent solution to replace drums or IBC's & bring a professional & clean look to your workshop. Whether it be for new oil, coolant or waste oil.

We can customise Bulk Oil Tanks to suit your workshop.

Features & Benefits

- Spill box with lid (self bunded tanks only)
- Tank fitted with Fill Point, Breathers & Dipstick
- Forkliftable
- Powder coated finish (custom colours available)



MADE IN AUSTRALIA

Oil Distribution Kits



We have the Oil Distribution Kits to increase your workshop efficiency & effectiveness.

These kits are ideal for small to medium size workshops looking to upgrade from hard pumps but also covers larger workshops that have additional 105C Oil Drums that need catering for.



HD 3 Wheel 205L Drum Trolley (AF-AP-1305) HD Drum Dolly (AF-AP-2325) 430 Series Reel (AF-RA-8430.440)

Specifications

- 3:1 Ratio Drum Pump - 14 LPM
- 5:1 Ratio Drum Pump - 18 LPM
- Metered Oil Gun (Accuracy ± 0.5%)

Part No. Description

AF-0A205K1	RAASM 3:1 Kit Includes: 3:1 Drum Pump, 4m Hose & Manual Oil Gun
AF-0A205K2	RAASM 5:1 Kit Includes: 5:1 Drum Pump, 4m Hose & Manual Oil Gun
AF-0A205K3	RAASM 3:1 Kit Includes: 3:1 Drum Pump, 4m Hose & Metered Oil Gun
AF-0A205K4	RAASM 5:1 Kit Includes: 5:1 Drum Pump, 4m Hose & Metered Oil Gun



JJs Dandenong - Workshop Fitout

ULTRAFLO
Standard Duty
Lever Action Grease Gun

- Complete with a rigid outlet & 4 jaw coupler
- Fitted standard with air valve & bulk filler
- Develops up to 4,500 PSI



AF-AP-1142-450
Standard Lever Action Grease Gun - 450g

ULTRAFLO
Standard Duty
Pistol Grip Grease Gun

- Complete with a 300mm flexible outlet & 4 jaw coupler
- Fitted standard with air valve & bulk filler
- Develops up to 4,500 PSI



AF-AP-1152-450
Standard Pistol Grip Grease Gun - 450g

A-FLO
Heavy Duty
Lever Action Grease Gun

- Professional grease gun for industrial applications
- Develops 10,000 PSI/690 Bar
- Robust Aluminum die cast grease gun head & filler
- Rigid Outlet with pro 4 jaw coupler



AF-UF-L450
HD Lever Action Grease Gun - 450g



ULTRAFLO
Heavy Duty Variable
Pistol Grip Grease Gun

- Ergonomic one hand grease gun
- Unique variable stroke for both high pressure & high volume applications
- Complete with 300mm flexible outlet & pro 4 jaw coupler
- Develop grease pressures up to 8000PSI



AF-UF-P450
HD Variable Pistol Grip Grease Gun - 450g

ULTRAFLO
Speedy
Grease Gun

- Operating pressure: up to 800bar (11,200 PSI)
- 2.5cc of grease per stroke
- Fitted with 60kg magnet
- 800mm flexible hose extension with grease coupler



AF-SGS-450
Speedy Grease Gun - 450g

ULTRAFLO
Air Operated
Grease Gun

- High pressure delivery performance of up to 3800PSI
- Continuous grease flow operation
- Complete with rigid outlet & 4 jaw coupler



AF-AP-1161
Air Operated Grease Gun - 450g

ULTRAFLO
Hand Operated
Bucket Grease Pump

- Robust construction
- Complete with universal follower plate
- Easy to use grease filling solution to load bulk or combination grease guns



AF-UF-GFP-20
Hand Operated Bucket Pump - 20kg

ULTRAFLO
2.5kg Mini Hand Operated
Grease Pump Kit

- Foot operated spring plunger
- 3m of high pressure hose & hand piece for high pressure & high volume applications
- Delivers up to 10,000PSI



AF-AP-2290
Mini Grease Pump Kit - 2.5kg

ULTRAFLO
Air Operated
Grease Pump Kit

- Your cost effective & dependable solution to easier greasing of plant & equipment
- The ULTRAFLO Kit is in for the long haul & will withstand all you throw at it plus it is sure to meet your budget
- 58:1 Ratio High Pressure Pump
- Kit complete with pump, follower plate, drum cover, 4m hose & grease gun with Z swivel
- 20kg and 180kg options available

AF-AE-KP7247PZ
58:1 Ratio Grease Pump Kit - 20kg
AF-AE-KP7294SCZ
58:1 Ratio Grease Pump Kit - 180kg



RAASM
50:1 Ratio
Air Operated Grease Kit

- Kit complete with pump, follower plate, drum cover, 4m hose & grease gun with Z swivel
- 50:1 Ratio Pump
- Your heavy duty & ever reliable solution
- Available in 20kg, 60kg & 180kg options

AF-RA-64031
RAASM 50:1 Ratio Air Operated Grease Kit - 20kg
AF-RA-64145
RAASM 50:1 Ratio Air Operated Grease Kit - 60kg
AF-RA-64195
RAASM 50:1 Ratio Air Operated Grease Kit - 180kg



ULTRAFLO
Grease Pump Trolley Kit

- Increases the efficiency in your busy workshop with an easy to use mobile grease trolley distribution kit
- These grease trolleys allow great flexibility to move your drums around the workshop with ease
- 58:1 high pressure grease pump



ultraflo

Bulky Item*

- AF-O-MTKG2**
ULTRAFLO Grease Pump Trolley Kit 4m Hose - 180kg
- AF-O-MTKG1R**
ULTRAFLO Grease Pump Trolley Kit 10m Reel - 180kg

RAASM
50:1 Grease Trolley Distribution Kit

- Increases the efficiency in your workshop with an easy to use mobile grease trolley distribution kit
- These grease trolleys allow great flexibility to move your drums around the workshop with ease
- 50:1 high pressure grease pump
- Heavy duty, 10 year warranty



RAASM

Bulky Item*

- AF-OAMTKG3**
RAASM Mobile Grease Trolley Kit, 4m Hose - 180kg
- AF-OAMTKG3R**
RAASM Mobile Grease Trolley Kit, 12m Reel - 180kg

ULTRAFLO
Quick Release Grease Coupler

- No leakage
- No lever needed
- Quick grip onto any sized nipple
- Allows both hands for grease gun operation
- Maximum pressure 15,000PSI
- 1/8" BSP (f) thread



ultraflo

- AF-UC-2020**
ULTRAFLO Quick Release Grease Coupler w Relief Valve
- AF-UC-2121**
ULTRAFLO Quick Release Grease Coupler

ULTRAFLO
Heavy Duty Grease Gun Extension

- Quality German construction
- Suitable for hand or air operated equipment
- Working Pressure: 5800PSI
- Burst Pressure: 13,750PSI



ultraflo

- AF-UF-GH300**
ULTRAFLO 300mm HD Grease Gun Extension
- AF-UF-GH450**
ULTRAFLO 450mm HD Grease Gun Extension
- AF-AP-1210C**
ULTRAFLO Rigid Extension with Coupler

ULTRAFLO
Heavy Duty 4 Jaw Grease Coupler

- Hardened body that withstands high pressure without deformation
- Hexagonal nut for easy tightening
- 4 jaw coupler with 1/8" BSP
- Easy on & off long life coupler



ultraflo

- AF-UF-HC4J**
ULTRAFLO Heavy Duty 4 Jaw Grease Coupler

ULTRAFLO
Grease Nipple Packs

- High quality zinc plated & case hardened mild steel body to help with corrosion resistance
- Heat treated springs for increase life
- Pack of 10 pieces



ultraflo

- AF-UF-AL185**
1/4" UNF Straight Grease Nipple
- AF-UF-LA34**
1/8" BSP 45 Degree Grease Nipple
- AF-UF-LA44**
1/8" BSP 90 Degree Grease Nipple

- AF-UF-AL185**
1/4" UNF Straight Grease Nipple
- AF-UF-LA34**
1/8" BSP 45 Degree Grease Nipple
- AF-UF-LA44**
1/8" BSP 90 Degree Grease Nipple
- AF-UF-LA43**
1/8" NPT 90 Degree Grease Nipple
- AF-UF-LA189**
1/4" UNF 90 Degree Grease Nipple
- AF-UF-L161**
6M x 1 Straight Grease Nipple
- AF-UF-L162**
8M x 1 Straight Grease Nipple
- AF-UF-AL200**
10M x 1 Straight Grease Nipple
- AF-UF-ALA168**
6M x 1 x 45 Degree Grease Nipple
- AF-UF-ALA165**
6M x 1 x 90 Degree Grease Nipple

ULTRAFLO
Grease Fitting Thread Tester

- Easily identify thread patterns for all common standard, British & metric grease fittings
- Made of aluminium



ultraflo

- AF-GR-305016**
ULTRAFLO Grease Fitting Thread Tester

ULTRAFLO
Grease Nipple Assortment Kits

- Refillable compartmentalized carry kit
- Available in kits suited to agricultural, industrial, metric, automotive & stainless steel applications



ultraflo

- AF-UF-4674**
Agricultural Grease Nipple Assortment Kit 100Pcs
- AF-UF-4675**
Imperial Grease Nipple Kit 110Pcs
- AF-UF-4676**
Metric Grease Nipple Assortment Kit 110Pcs

ULTRAFLO
Right Angle Coupler

- 90 Degree Right Angle Coupler
- 1/8" BSP



ultraflo

- AF-UF-RAGC013**
90 Degree Right Angle Coupler 1/8" BSP

ULTRAFLO
Grease Injector Needle

- Perfect tool to provide grease in very tight places, such as universal joints & sealed bearings



ultraflo

- AF-UF-GIN01**
ULTRAFLO Grease Injector Needle with Nipple

ULTRAFLO



Needle Nose Dispenser

- Used to dispense a fine line of grease
- Narrow design for hard to reach fittings in inaccessible areas



AF-UF-NND013

Needle Nose Dispenser 1/8" BSP

AF-UF-PNND05

Narrow Needle Nose Dispenser 1/8" BSP

RAASM



Grease Gun & Z-Swivel

- Ergonomic design
- 1/4" BSP(f) inlet thread
- Available with flexible or rigid extension



AF-RA-66889

RAASM Grease Gun with Z Swivel

AF-AE-S14Z

RAASM Standard 1/4" BSP Z Swivel

ULTRAFLO



Remote Grease Anchor Blocks with Grease Nipples

- T-drilled install the grease straight or 90 degrees to the grease nipple.
- Supplied with 1/8" BSP Straight grease nipples



AF-LC-99-RGB1-C

1 point 10 x 1 Grease Block with 1/8" BSP Nipples

AF-LC-99-RGB2-C

2 point 10 x 1 Grease Block with 1/8" BSP Nipples

AF-LC-99-RGB3-C

3 point 10 x 1 Grease Block with 1/8" BSP Nipples

AF-LC-99-RGB4-C

4 point 10 x 1 Grease Block with 1/8" BSP Nipples

AF-LC-99-RGB5-C

5 point 10 x 1 Grease Block with 1/8" BSP Nipples

AF-LC-99-RGB6-C

6 point 10 x 1 Grease Block with 1/8" BSP Nipples

AF-LC-99-RGB8-C

8 point 10 x 1 Grease Block with 1/8" BSP Nipples

RAASM



440 Series Grease Reels

- Unique smooth & trouble free operation
- Equipped with 0.6m Connection Hose
- Bracket enables easy installation (option of swivel or fixed)
- 3/8" BSP (f) inlet & 1/4" BSP (m) outlet connection
- Pressure rating: 600Bar



AF-RA-9440.501

RAASM 440 Series Grease Reel 12m x 1/4" ID Hose

AF-RA-9440.502

RAASM 440 Series Grease Reel 18m x 1/4" ID Hose

AF-RA-9440.506

RAASM 440 Series Grease Reel 15m x 3/8" ID Hose

RAASM



430 Series Grease Reels

- Can be roof, wall or bench mounted
- Equipped with 0.6m Connection Hose
- 3/8" BSP (f) inlet & 1/4" BSP (m) outlet connection
- Pressure rating: 600Bar



AF-RA-8430.501

RAASM 430 Series Grease Reel 12m x 1/4" ID Hose

AF-RA-8430.502

RAASM 430 Series Grease Reel 18m x 1/4" ID Hose

AF-RA-8430.506

RAASM 430 Series Grease Reel 15m x 3/8" ID Hose

ULTRAFLO



Nylon Tube Semi-Rigid

- 25m x 6mm high pressure nylon grease hose
- Suitable for 6mm push in grease fitting connectors



AF-LC-99-PT25M

25m x 6mm High Pressure Tube - Empty

AF-LC-99-PT100M

100m x 6mm High Pressure Tube - Empty

AF-LC-99-PT25MGF

25m x 6mm High Pressure Tube - Grease Filled

AF-LC-99-PT100MGF

100m x 6mm High Pressure Tube - Grease Filled

ULTRAFLO



Straight Compression Connector

- Suits 6mm hose



AF-LC-99-C6M

6mm x 6mm Straight Connector

AF-LC-99-C6MSS

6mm x 6mm Stainless steel Straight Connector

ULTRAFLO



Remote Grease Anchor Blocks

- T-drilled install the grease straight or 90 degrees to the grease nipple.
- Supplied without 1/8" BSP Straight grease nipples



AF-LC-99-RGB1

1 point 10 x 1 Grease Block

AF-LC-99-RGB2

2 point 10 x 1 Grease Block

AF-LC-99-RGB3

3 point 10 x 1 Grease Block

AF-LC-99-RGB4

4 point 10 x 1 Grease Block

AF-LC-99-RGB5

5 point 10 x 1 Grease Block

AF-LC-99-RGB6

6 point 10 x 1 Grease Block

AF-LC-99-RGB8

8 point 10 x 1 Grease Block

ULTRAFLO



90 Degree Compression Fitting

- Suits 6mm hose
- 90 degree fitting



AF-LC-99-CF906M

90 degree M6/1 x 6mm

AF-LC-99-CF906MSS

M6 x 6mm Stainless Steel

AF-LC-99-CF908M

M8/1 x 6mm Stainless Steel

AF-LC-99-CF908MSS

M8x1 x 6mm Stainless Steel

AF-LC-99-CF9010M

M10/1 x 6mm

AF-LC-99-CF9010MSS

Male Connector 90deg Elbow SS

AF-LC-99-CF901/8

1/8 BSP x 6mm T

AF-LC-99-CF901/8SS

1/8 BSP x 6mm Stainless Steel

ULTRAFLO
Straight Compression Fitting

• Suits 6mm hose



ultraflo

- AF-LC-99-SCF6M**
M6/1 x 6mm
- AF-LC-99-SCF6MSS**
M6/1 x 6mm Stainless Steel
- AF-LC-99-SCF8M**
M8/1 x 6mm
- AF-LC-99-SCF8MSS**
M8/1 x 6mm Stainless Steel
- AF-LC-99-SCF10M**
M10/1 x 6mm

- AF-LC-99-SCF10MSS**
Male Connector Straight 6mm SS
- AF-LC-99-SCF1/8**
1/8 BSP x 6mm
- AF-LC-99-SCF1/8SS**
1/8 BSP x 6mm Stainless Steel
- AF-LC-99-SCF1/4**
1/4 BSP x 6mm

ULTRAFLO
Push in Straight Connector

• Suits 6mm hose
• Push-in fitting



ultraflo

- AF-LC-99-PISC6M**
M6/1 x 6mm
- AF-LC-99-PISC8M**
M8/1 x 6mm
- AF-LC-99-PISC10M**
M10/1 x 6mm
- AF-LC-99-PISC1/8**
1/8 BSP x 6mm
- AF-LC-99-PISC1/8NPT**
1/8 NPT x 6mm
- AF-LC-99-PISC1/4UNF**
1/4 UNF x 6mm

ULTRAFLO
Push in 90 Degree Connector

• Suits 6mm hose
• Push-in fitting
• 90 degree fitting



ultraflo

- AF-LC-99-PIEC906M**
M6/1 x 6mm
- AF-LC-99-PIEC908M**
M8/1 x 6mm
- AF-LC-99-PIEC9010M**
M10/1 x 6mm
- AF-LC-99-PIEC901/8**
1/8 BSP x 6mm
- AF-LC-99-PIEC901/8NPT**
1/8 NPT x 6mm

ULTRAFLO
Push in 90 Degree Swivel Connector

• Suits 6mm hose
• Push-in fitting
• 90 degree Swivel fitting



ultraflo

- AF-LC-99-PISWC906M**
M6/1 x 6mm
- AF-LC-99-PISWC908M**
M8/1 x 6mm
- AF-LC-99-PISWC9010M**
M10 x 1 x 6mm tube Push-in fitting
- AF-LC-99-PISC901/8**
1/8 BSP x 6mm
- AF-LC-99-PISC901/8NPT**
1/8 NPT x 6mm
- AF-LC-99-PISC901/4UNF**
1/4 UNF x 6mm

ULTRAFLO
Push in Straight Connector

• Suits 6mm hose
• Push-in fitting



ultraflo

- AF-LC-99-PIC6M**
6mm x 6mm

ULTRAFLO
Straight Adaptor



ultraflo

- AF-LC-98-0401160010**
M8/1M x M10/1M (23mm)
- AF-LC-98-04011600206**
M10/1M x M10/1M (18mm)
- AF-LC-98-04011600306**
1/8 BSP M x M10/1M (18mm)
- AF-LC-98-04011600506**
M6/1M x 1/8 (24mm)
- AF-LC-98-04011600606**
M10/1M x M10/1M (50mm)
- AF-LC-98-04011600706**
M10/1M x M10/1M (35mm)
- AF-LC-98-04011600806**
M8/1M x M8/1M (35mm)
- AF-LC-99-A14X18S20**
1/4 BSP M x 1/8 BSP (M10) M (20mm)

- AF-LC-98-04011601006**
1/4 BSP M x 1/8 BSP (M10) M (23mm)
- AF-LC-98-04011601106**
1/4 BSP M x 1/8 BSP (M10) M (55mm)
- AF-LC-98-04011601206**
1/4 BSP M x 1/8 BSP (M10) M (26mm)
- AF-LC-98-04011601306**
1/4 UNEF M x 1/8 BSP (M10) M (24mm)
- AF-LC-98-04011601406**
1/4 UNF M x 1/8 BSP (M10) M (24mm)
- AF-LC-40-C4668D**
1/8 BSPM x 1/8BSPF - 1/2" Long Extension
- AF-LC-40-C4668E**
1/8 BSPM x 1/8BSPF - 1" Long Extension
- AF-LC-40-C4668J**
1/8 BSPM x 1/8BSPF - 1.5" Long Extension
- AF-LC-40-C4668K**
1/8 BSPM x 1/8BSPF - 1 3/4" Long Extension
- AF-LC-40-C4668L**
1/8 BSPM x 1/8BSPF - 2" Long Extension

ULTRAFLO
45 Degree Adaptor



ultraflo

- AF-LC-99-A451/8**
1/8 BSPM x 1/8 BSPF
- AF-LC-98-100210095**
M6/1M x M8/1F
- AF-LC-98-100210085**
M8x1/1 Male x M8/1

ULTRAFLO
90 Degree Adaptor



ultraflo

- AF-LC-99-A901/8**
1/8 BSPM x 1/8 BSPF
- AF-LC-98-100210032**
1/4 UNFM / 1/8 BSPF
- AF-LC-98-100210010**
M6/1M x M10/1F
- AF-LC-98-100210020**
M8x1/1M x 1/8 BSPF

ULTRAFLO
High Pressure Grease Hose

• 8.6mm or 11.3mm high pressure hose
• 11,600PSI



ultraflo

- AF-LC-99-HPH50M**
50m x 8.6mm High Pressure Hose - Empty
- AF-LC-99-HPH50MGF**
50m x 8.6mm High Pressure Hose - Grease Filled
- AF-LC-99-EHP100M**
100m x 11.3mm High Pressure Hose - Empty
- AF-LC-99-EHP100MGF**
100m x 11.3mm High Pressure Hose - Grease Filled

ULTRAFLO
90 Degree Hose Stud

• Suits 8.6mm hose
• Requires Screw Sleeve
• 90 degree



ultraflo

- AF-LC-99-HS906M17**
6mm Hose Stud (17 x 29)
- AF-LC-99-HS906MSS**
6mm Stainless Steel Hose Stud (28 x 37)
- AF-LC-99-HS906M22**
6mm Hose Stud (22 x 45)

ULTRAFLO
Hose Stud 45 Degree



- Suits 8.6mm hose
- Requires Screw Sleeve
- 45 degree



- AF-LC-99-HS456M**
6mm Hose Stud (24 x 15)
- AF-LC-99-HS456MCG**
6mm Hose Stud with Claw Groove (24 x 15)

ULTRAFLO
Hose Stud Connector Straight Fitting



- Suits 8.6mm & 11.3mm



- AF-LC-99-HSS20M**
6mm Hose Stud (20mm)
- AF-LC-99-HSS30M**
6mm Hose Stud (30mm)
- AF-LC-99-HSS30MSS**
Straight 6mm Hose Stud SS
- AF-LC-99-HSS65M**
6mm Hose Stud (65.5mm)
- AF-LC-99-HSS08M**
8.6mm Hose Stud Connector (21.5mm)
- AF-LC-99-HSS20M11**
11.3mm Hose Stud (20mm)

ULTRAFLO
Bulkhead Straight & 90 Degree Elbow Fitting



- Suits 6mm Tube



- AF-LC-99-BH6M**
6mm x 25mm Bulkhead
- AF-LC-99-BHS6M**
6mm x 6mm Bulkhead Straight
- AF-LC-99-BHS6MSS**
6mm x 6mm Bulkhead Straight Stainless Steel
- AF-LC-99-BE906M**
6mm Tube x 6mm Bulkhead 90 degree
- AF-LC-99-BE906MSS**
6mm Tube x 6mm Bulkhead 90 degree Stainless Steel

ULTRAFLO
Compression Nut Fitting



- Suits 8.6mm & 11.3mm hose
- Use with Compression Olive



- AF-LC-99-CN**
6LL 6mm
- AF-LC-99-CNSS**
6LL 6mm Stainless Steel
- AF-LC-99-CNL**
6L 8mm
- AF-LC-99-CNLSS**
6L 8mm Stainless Steel

ULTRAFLO
Screw Sleeve Fitting



- Suits 8.6mm & 11.3mm hose



- AF-LC-99-SS**
8.6mm Screw Sleeve Fitting
- AF-LC-99-SSSS**
8.6mm Stainless Screw Sleeve Fitting
- AF-LC-99-SS11**
11.3mm Screw Sleeve Fitting

ULTRAFLO
Reusable Hose End Swivel Fitting



- Suits 8.6mm hose



- AF-LC-99-RHESWSS**
Reusable Hose End Stud 1/8NPT, Swivel & Screw Sleeve
- AF-LC-99-RHESO**
Reusable Hose End Stud 1/8 NPT Stud Only
- AF-LC-99-RHESSS**
Screw Sleeve for Reusable Hose End Only

ULTRAFLO
Compression Olive Fitting



- Suits 8.6mm & 11.3mm hose
- Use with Compression Nut



- AF-LC-99-CO**
6LL 6mm
- AF-LC-99-COSS**
6LL 6mm Stainless Steel
- AF-LC-99-COL**
6L 8mm
- AF-LC-99-COLSS**
6L 8mm Stainless Steel

ULTRAFLO
JIC 7/16 Reusable Hose Stud



- For 8.3mm Hose
- Stainless steel options available



- AF-LC-98-BT0544**
Straight Fitting
- AF-LC-98-BT0555**
45 degree Fitting
- AF-LC-98-BT0566**
90 degree Fitting
- AF-LC-98-BT0544SS**
Straight Fitting Stainless Steel
- AF-LC-98-BT0566SS**
90 degree Fitting Stainless Steel

ULTRAFLO
Swivel Union Fitting



- AF-LC-99-SU1/8M**
6mm x 1/8 BSP
- AF-LC-99-SUM10**
6mm x M 10x1

ULTRAFLO
Banjo Fitting 90 Degree



- AF-LC-99-BF1/8**
M10 x 1/8 BSP
- AF-LC-99-BFM10**
M10 x 1/M10 x 1

Bulk Grease Transfer Systems

We understand flow rates & pressures, with understanding your site & performance requirements our team can put together a solution to help you move bulk grease with ease. Static or mobile, our in house engineering team can assist, from concept right through to installation.



MADE IN AUSTRALIA

ULTRAFLO Air Operated Pump Kit



Features & Benefits

The most cost effective & dependable solution to easier greasing of plant & equipment

The ULTRAFLO Air Operated Pump Kit is in for the long haul - withstanding all you throw at it & is sure to meet your budget

58:1 Ratio High Pressure Grease Pump

Up to 1500 g/Min

2 year warranty

Ideal for busy workshops where greasing is undertaken regularly

Kit includes: Pump, Drum Cover, Follower Plate, 4M Hose, Grease Gun & Z Swivel

Applications

Transport, Earthmoving, Industrial, Agricultural & Mining

Part No.	Description
AF-AE-KP7247PZ	ULTRAFLO 58:1 Ratio Grease Kit - 20kg
AF-AE-KP7294SCZ	ULTRAFLO 58:1 Ratio Grease Kit - 180kg
AF-AP-1303	Heavy Duty Hand Trolley - 20kg
AF-AP-1305	Heavy Duty Mobile Trolley - 180kg
AF-AP-4325	HD 20kg Drum Dolly
AF-AP-2325	HD 180kg Drum Dolly



Bull Bros - Diesel & AdBlue Fueltainer

ULTRAFLO
Heavy Duty Rotary Drum Pump



- Solid aluminium construction
- 3 piece steel suction pipe & 2" bung adaptor
- Suitable for petrol, diesel & motor oils



- AF-AP-1321**
ULTRAFLO HD 205L Rotary Barrel Pump
- AF-AP-1321H**
ULTRAFLO HD 205L Rotary Barrel Pump Hose & Nozzle

ULTRAFLO
High Flow Rotary Drum Pump



- Flow Rate: up to 100 LPM
- Solid aluminium construction
- Steel suction pipe & foot strainer
- Ideal for fast efficient transfer of diesel fuel, petrol or kerosene
- Also suitable for oils up to SAE30
- Complete with 2.4m of hose, metal nozzle & holster
- 2" bung adaptor



- AF-AP-1320**
ULTRAFLO High Flow Diesel Pump
- AF-AP-1320F**
ULTRAFLO High Flow Diesel Pump with 1" Filter

PIUSI
Explosion Proof Refuelling Kit



- Premium pump EX rated
- Flow rate 50 LPM
- Fuel fitted
- Meter
- 4m hose
- Auto nozzles
- Suitable for petrol/pump



- AF-FP-375010**
EX50 12V Pump Kit 4m Hose, Auto Nozzle & Meter
- AF-FP-376010**
EX50 240V Pump Kit 4m Hose, Auto Nozzle & Meter

PIUSI
Explosion Proof Refuelling Pump



- Ex Rated transfer pump is suitable for transferring diesel or unleaded fuel
- Pumps are self priming & have an inbuilt bypass valve



- AF-FP-371000**
EX50 12V Pump Only - 50 LPM Flow Rate
- AF-FP-373000**
EX50 240V Pump Only - 50 LPM Flow Rate
- AF-FP-395010**
EX140 240V Pump Only - 140 LPM Flow Rate

ULTRAFLO
Refuelling Pump



- Vane pump with motor
- Built-in by-pass valve
- Duty Cycle: 30min
- Flow Rate: up to 50 LPM
- Noise level below 70dB
- 12V or 24V DC operation
- 2m cables with clips for battery connection



- AF-FP-342000**
ULTRAFLO 12V Refuelling pump Only
- AF-FP-347000**
ULTRAFLO 24V Refuelling Pump Only

ULTRAFLO
Refuelling Pump Kit



- Vane pump with motor
- Built-in by-pass valve
- Duty cycle: 30min
- Flow rate: up to 50 LPM
- Noise level below 70dB
- 12V or 24V DC operation
- 2m cables with clips for battery connection
- 4m hose (diameter 3/4")
- Manual or automatic nozzles available



- AF-FP-22500C**
ULTRAFLO 12V Refuelling Pump kit
- AF-FP-22600C**
ULTRAFLO 24V Refuelling Pump kit
- AF-FP-22500C-A**
ULTRAFLO 12V Refuelling Pump kit & Auto Nozzle
- AF-FP-22600C-A**
ULTRAFLO 24V Refuelling Pump Kit & Auto Nozzle

RAASM
Diaphragm Pump



- Exceptional quality & performance
- Self-priming
- 10 year warranty
- Suitable for diesel, oils, coolant & waste oil



- AF-RA-3C1/16111NHH**
RAASM 3/4" Series Aluminium Pump 70LPM
- AF-RA-3C1/26111NHH**
RAASM 1" Series Aluminium Pump 170LPM

ULTRAFLO
Diesel Transfer Pump



- Self-priming rotary vane pump
- Built-in by-pass valve
- Built-in strainer
- Continuous duty cycle
- 1" BSP(f) inlet/outlet
- Flow Rate: 60 to 100 LPM
- Ideal for bulk diesel fuel transfer



- AF-E-210750**
ULTRAFLO PA1 240V Diesel Transfer Pump 60 LPM
- AF-E-210760**
ULTRAFLO PA2 240V Diesel Transfer Pump 80 LPM
- AF-E-210780**
ULTRAFLO PA2 240V Diesel Transfer Pump 100 LPM

PIUSI
High Flow Bi Pump & Refuelling Kit



- Self priming, rotary vane pump equipped with a by-pass valve
- Flanged 1" BSP (f) connectors
- Flow Rate: up to 80 LPM
- Renowned for its ability to consistently outlast any other pumps in its league



- AF-FP-36301A**
PIUSI 12V Bi Pump Only - 80 LPM
- AF-FP-36303A**
PIUSI 24V Bi Pump Only - 80 LPM
- AF-FP-363280K**
Piusi 12V Bi Pump Kit, 4m hose & Auto Nozzle

PIUSI
Pit Stop Refuelling Kit



- Two 12V Diesel Pumps 45 LPM
- Automatic hose reel
- 14m x 3/4"Hose
- Water Filter
- Automatic Diesel Nozzle
- Easy to install



- AF-FP-212000**
Pitstop 45 12V Refuelling Kit
- AF-FP-213000**
Pitstop 45 24V Refuelling Kit

PIUSI
Diesel Transfer Pump



- Self-priming rotary vane pump
- Continuous duty
- Inbuilt bypass valve
- 1" inlet/outlet (70, 90 & 120 LPM)
- 1 1/4" inlet & 1" outlet (140 LPM)



- AF-FP-732000**
PIUSI 240V Panther Transfer Pump Only 70 LPM
- AF-FP-73320A**
PIUSI 240V Panther Transfer Pump Only 90 LPM
- AF-FP-326000A**
PIUSI 240V Panther Transfer Pump Only 120 LPM
- AF-FP-395050**
PIUSI 240V E140 Transfer Pump Only 140 LPM

GESPASA
Diesel Pump



- Centrifugal pump
- Flow according to manometric height: from 100 to 500 LPM
- Motor 240V
- 2,800 RPM
- Continuous duty Cycle
- Thermal protector
- 2" BSP inlet/outlet



- AF-GE-02050**
CG-150 240V High Flow Transfer Pump

ULTRAFLO
Diesel Flow Meter



- Suitable for diesel fuel only
- 1" BSP (F) inlet & outlet ports
- Mechanical gear meter with ± 1.0% accuracy
- Flow rate: 20-120 LPM
- Max working pressure: 3.5Bar (50PSI)



- AF-FP-553000**
ULTRAFLO K33 3 Digit 1" Flow Meter
- AF-FP-563000**
ULTRAFLO K44 4 Digit 1" Flow Meter

PIUSI
K24 Inline Digital Meter



- An economical, reliable & versatile solution for metering fluids
- Turbine type meter reinforced with polyamide body
- 1" BSP inlet/outlet connections
- Max. Flow Rate: up to 120 LPM
- Display can be rotated to 4 different positions
- Battery powered with 2 replaceable AAA batteries



- AF-FP-408100**
K24 Inline Digital Flow Meter - 1"

PIUSI
ATEX Mechanical & Digital Flow Meter



- Meets the ATEX requirements related to the use of materials in potentially explosive atmospheres.
- Resettable
- Flow rate: 20-120 LPM
- Accuracy: +/- 0.3%



- AF-FP-570030**
K33 ULP 1" Mechanical Flow Meter
- AF-FP-408X00**
K24 ULP 1" Digital Flow Meter ATEX/IECEx

PIUSI
Pulse Flow Meter



- Pulse flow meters for oil & diesel
- Flow Rate: Up to 100 LPM
- Accuracy: ±0,5%
- Repeatability: 0,2%



- AF-FP-472A20**
K600/3 Oil Only Meter - 3/4" - 6-60 LPM
- AF-FP-472A00**
K600/3 Oil/Diesel Meter - 1" - 10-100 LPM
- AF-FP-473000**
K600/4 Oil/Diesel Pulser 1-1/2" BSP - 15-150 LPM
- AF-FP-1175200B**
Remote Display for K600/3

ULTRAFLO
High Accuracy Industrial Meter



- Designed & manufactured for Australia conditions
- All metal rotors
- IP67 Mechanical display
- Options - LCD Displays & remote mount display
- 2 year warranty
- Intrinsically safe



- AF-UF-25A-M**
ULTRAFLO 1" Aluminium Meter with 4 Digit Mechanical Register (10-150LPM)
- AF-UF-40A-M**
ULTRAFLO 1 1/2" Aluminium Meter with 4 Digit Mechanical Register (15-250LPM)
- AF-UF-50A-M**
ULTRAFLO 2" Aluminium Meter with 4 Digit Mechanical Register (30-450LPM)

- AF-UF-25A-P**
ULTRAFLO 1" Aluminium Pulse Meter (10-150LPM)
- AF-UF-40A-P**
ULTRAFLO 1 1/2" Aluminium Pulse Meter (15-250LPM)
- AF-UF-50A-P**
ULTRAFLO 2" Aluminium Pulse Meter (30-450LPM)

RAASM
540 Series Diesel Hose Reel



- Can be roof, wall or bench mounted
- Equipped with 0.6m Connection Hose
- 1" BSP (f) inlet & 1" BSP (m) outlet
- Pressure rating: 10Bar



Bulky Item*

- AF-RA-8540.601**
Diesel Hose Reel 15m x 3/4" ID Hose
- AF-RA-8540.603**
Diesel Hose Reel 15m x 1" ID Hose
- AF-RA-8540.610**
Diesel Hose Reel 10m x 1" ID Hose

FUELSHOT
Standard Automatic Nozzle



- Automatically shuts off nozzle
- Flow Rate: up to 60 LPM
- Includes 1" BSP(f) Swivel
- Not suitable for gravity feed applications



- AF-FS-AL60**
FUELSHOT 3/4" Auto Diesel Nozzle - 60 LPM
- AF-FS-UL60**
FUELSHOT 3/4" Auto Unleaded Nozzle - 60 LPM

FUELSHOT
Manual Fuel Nozzle



- Flow Rates: up to 100 LPM
- Inlet 1" BSP(f) swivel
- Suitable for gravity feed systems
- Ideal for farm tank & smaller fuel dispensing applications



- AF-FS-ML2**
FUELSHOT Manual Diesel Nozzle with black cover
- AF-FS-MUL2**
FUELSHOT Manual Unleaded Nozzle with black cover

FUELSHOT
Slimline Automatic Nozzle



- Automatically shuts off nozzle
- Flow Rate: up to 80 LPM
- Includes 1" BSP(f) Swivel
- Not suitable for gravity feed applications



- AF-FS-AL80**
FUELSHOT 3/4" Slimline Diesel Nozzle - 80 LPM
- AF-FS-UL80**
FUELSHOT 3/4" Slimline Unleaded Nozzle - 80 LPM

FUELSHOT
High Flow Truck Stop Automatic Nozzle



- Automatic shut off diesel nozzle
- For high flow transfer of up to 120 LPM
- Suitable for pump applications only
- Complete with 1" BSP(f) Swivel
- Ideal for high flow mobile pumps, truck bus or fleet operations



- AF-FS-AL120**
FUELSHOT 1" High Flow Truck Nozzle - 120 LPM
- AF-HU-503038-04**
Husky 1" High Flow Truck Nozzle

FUELSHOT
Premium Automatic Nozzle



- Automatically shuts off nozzle
- Flow Rate: 3/4" 80 LPM, 1" 140 LPM
- Includes 1" BSP(f) Swivel
- Not suitable for gravity feed applications



- AF-EL-102-ZVA24.1**
3/4" Slimline Diesel Nozzle - 80 LPM
- AF-EL-102-ZVA24.1R**
3/4" Slimline Unleaded Nozzle - 80 LPM
- AF-EL-102-ZVA25-41**
1" High Flow Diesel Nozzle Heavy Spring

FUELSHOT
Fuel Nozzle Swivel



- Compact aluminium & brass construction
- Viton/Buna - N Seals



AF-FS-SP20X20
3/4" BSP (m) x 3/4" BSP (f) Single Plane Swivel

AF-FS-SP341
3/4" BSP (m) x 1" BSP (f) Single Plane Swivel

AF-FS-SP25X25
1" BSP (m) x 1" BSP (f) Single Plane Swivel

FUELSHOT
Dual Plane Swivel



- Provides a full 360 degree spherical rotation for free-movement facilitation flexibility to refuel vehicles from almost any direction
- Unique design to allow high flow rates



AF-FS-DP34
3/4" BSP (m) x 3/4" BSP (f) Dual Plane Swivel

AF-FS-DP11
1" BSP (m) x 1" BSP (f) Dual Plane Swivel

A-FLO
Breakaway Coupling



- Compact & lightweight
- 1" (m) x 1" (f) multi-plane swivel joint
- Unique inline latching mechanism
- Re-Connectable



AF-HU-5969140
Safe T Break 1" BSP (m) x 1" (f) BSP

FLOMAX
Diesel Fuel Nozzles



- Flow rates up to 680 LPM
- Includes 1 1/2" NPT (f) Swivel
- Highest flow rate capability
- Reducing refuelling time
- Dry break fitting
- Dependable ball locking mechanism
- Automatic shut off



AF-FX-FNBL-P
Fuel Nozzle with Ball Lock with Swivel & Plug

AF-FX-FRA-C
Fuel Receiver - Alum. With Cap

HOSEBUN
Hose Hanger for High Hose Mast



- Patented urethane hose saddle designed to properly suspend hoses
- Suspend hoses in a permanent, temporary or semi rigid position
- Used in various industrial, commercial sites & applications



AF-H-HB100ED
Hosebun with Metal D-Ring, Holds up to 1" Hose

AF-H-HB125ED
Hosebun with Metal D-Ring, Holds up to 1 1/4" Hose

AF-H-HB150ED
Hosebun with Metal D-Ring, Holds up to 1 1/2" Hose

A-FLO
Diesel Tank Bottom Fill Kit



- Designed & configured for easy installation to horizontal or tripod tanks where fill points are within 200mm from tank edge & the overall maximum height is 3200mm (3.2m)
- Standard Kits are fitted with a Sight Tube, All Fittings, Valves, Camlocks & Gal Pipe Fill Point with stand alone Vent



AF-BFK-32
1 1/4" Bottom Fill Kit with Sight Tube

AF-BFK-38
1 1/2" Bottom Fill Kit with Sight Tube

AF-BFK-50
2" Bottom Fill Kit with Sight Tube

SAR-GEL
BLUE Water Finding Paste



- Fast & reliable way to detect water in tanks containing diesel & ULP fuels
- The orange paste will turn blue when it comes into contact with water



AF-SG-FT0001
Water Finding Paste - 28g

A-FLO
Spin Secure Lockable Filler Cap



- Does not require a padlock
- 2" BPT Female
- Rubber gasket numbered lock with over 50,000 combinations
- Complete with 3 keys
- Integrated safety thermal relief
- Male nipple adaptor available (STC-750/754-200)



AF-STC-FSS750MF
Spin Secure Lockable Filler Cap

AF-STC-FSS754MF
Spin Secure Lockable Filler Cap with Built-in breather

AF-STC-750/754-200
Spin Secure 2" Nipple Adaptor

PIUSI
Cube 240V Diesel Bowser



- Total refuelling solution in a box
- Built-in nozzle holster
- Automatic pump stop
- 240V Self-Priming Vane Pump
- Flow rates 70 LPM or 90 LPM
- 4m x 1" Delivery Hose
- Automatic Nozzle
- 4 Digit Meter
- Pedestal available



AF-FP-59100A
PIUSI Cube 70 240V Diesel Bowser 70 LPM

AF-FP-592000
PIUSI Cube 90 240V Diesel Bowser 90 LPM

FUELSHOT
Farm Tank Fuel Hose



- 25mm ID diesel, petrol & oil
- Resistant hose
- Kink resistant
- Max. Working Pressure: 145PSI
- Includes anti-static copper wire for increased safety
- Excellent UV resistant & flexibility
- Suitable for drum pumps & overhead tanks
- 20m coil length
- Made in Australia



AF-RI-25FTH20-ASW
FUELSHOT 25mm Farm Tank Hose - 20M

ULTRAFLO
100LPM 240V Bowser



- Total refuelling solution in a box
- Built-in nozzle holster
- Automatic pump stop
- 240V Self-Priming Vane Pump
- Flow rates 100 LPM
- 4m x 1" Delivery Hose
- Automatic Nozzle
- 4 Digit Meter
- Pedestal available



AF-E-AF3000
ULTRAFLO 100 240V Bowser without Pedestal 100 LPM

PIUSI
Diesel Fuel Management Bowser



- Up to 50 users
- Flow Rate: 12V 56 LPM, 240V 70 LPM
- Memory 255 transactions
- Accuracy: +/- 0.5%
- Continuous operation
- IP55 protection
- Pedestal available
- Software required



AF-FP-59400C
Cube 70MC 240V Diesel Bowser 70 LPM (50 users)

AF-FP-59413A
Cube 70MC 12V Diesel Bowser 56 LPM (50 users)

AF-FP-F14144040
Kit Including Software 10 User Keys, 1 Management Key & USB Adaptor

AF-FP-F15904000
Yellow User Keys (10 Per Pack)

PIUSI



MCBOX Standard Fuel Management System

- Single pump only
- Up to 80 users
- Quick & easily download transactions
- Easy to install
- Requires pulse input
- Memory 255 transactions
- 240V
- Software required with MCBOX (FP-F14144040)



AF-FP-F1398000C
MCBOX 240V 80 Users

AF-FP-F14144040
Kit Including Software 10 User Keys, 1 Management Key & USB Adaptor

AF-FP-F15904000
Yellow User Keys (10 Per Pack)

Honda



Diesel Transfer Pump Petrol powered

- 1.1 HP recoil start
- 4 stroke, mounting bracket & carry handle
- Max Head: 36M
- Max. Flow Rate: 130 LPM
- Weight: 5.5kg



AF-UF-AP/GX25
1" Honda Diesel Transfer Pump

ULTRAFLO



Bulk Fuel Storage Tank Filter Kit

- The kit sets you up to protect your assets by ensuring every drop is filtered & your tank is protected from any moisture or condensation
- Simple to maintain & service
- Ideal for static above ground, overhead or mobile tanks
- Removes 99.5% of contamination 10 Micron or larger
- Water absorption capacity - 1 filter holds up to two cans of water



AF-DF-P902973
Bulk Fuel Filter Kit, TRAP Breather & Fittings

POLYCUBE ECO



with Standard Pump Kits

- Complete with a Standard 12V 35 LPM Pump with Battery Cable & Clips, 4M x 3/4" Diesel Delivery Hose & Auto Nozzle
- Lockable lid



Bulky Item*

AF-FC-ECO100
100L Slimline POLYCUBE ECO with Standard Kit

AF-FC-ECO200
200L Slimline POLYCUBE ECO with Standard Kit

AF-FC-ECO500
500L Stumpy POLYCUBE ECO with Standard Kit

AF-FC-ECO1000
1000L Slimline POLYCUBE ECO with Standard Kit

AF-FC-ECO300-50
330L Diesel & 50L AdBlue® Combo POLYCUBE ECO

ULTRAFLO



2.4HP Petrol Driven Diesel Pump

- 1" & 1.5" diesel pump available
- 2.4HP 4 stroke petrol engine
- Recoil start system
- Flow rate: up to 180 LPM
- Weight: 1" 15kg, 1.5" 20kg



AF-UF-29PE1DV
2.4HP Petrol Driven 1" Diesel Pump Viton Seals

AF-UF-29PE15DV
2.4HP Petrol Driven 1.5" Diesel Pump Viton Seals

ULTRAFLO



4HP Diesel Driven 2" Diesel Pump

- 4HP stroke petrol engine
- Recoil start system
- Flow rate: 330 LPM
- Weight: 70kg
- Non self priming
- 2" Inlet / Outlet



Bulky Item*

AF-UF-4DE2DV
4HP Diesel Driven 2" Cast Iron Diesel Pump Viton Seals (Non Self-Priming)

PIUSI



OCIO Level Indicator

- Continuous metering
- Indication in height, volume & filling percentage
- Maximum & minimum level alarms
- High accuracy
- Intuitive software managing procedure
- Easy installation
- PC linkup option



AF-FP-75510D
OCIO Level Indicator LV/RS Output - Diesel

A-FLO



High Level Alarm

- Suitable for steel or plastic tanks
- Suitable for diesel, oil & water
- High power alarm sounder 97dB at 1M
- Flashing light on top of unit
- Mute button stops the sounder & light still flashes
- Float switch supplied with 5M cable
- 2 year battery life, if tested weekly with no alarms



AF-HFE-HLA001
A-FLO High Level Diesel/Oil Alarm - Steel Tanks

ULTRAFLO



6.5HP Petrol Driven 2" Diesel Pump

- 6.5HP 4 stroke petrol engine
- Recoil start system
- Flow rate: 330 LPM
- Weight: 28kg
- Non self priming
- 2" Inlet / Outlet



Bulky Item*

AF-UF-65PE2DV
6HP Diesel Driven 2" Cast Iron Diesel Pump Viton Seals (Non Self-Priming)

ULTRAFLO



Farm Tank Fuel Filter

- Economic fuel filters for use in gravity, hand, air or electrical pump applications
- Includes a 10 micron fuel filter, drain valve & replaceable bowl
- Rust & weather resistant
- 1" BSP inlet & outlet
- Max. Working Pressure: 10 Bar/150PSI
- Suitable for Diesel & Unleaded fuel



AF-UF-FF25-1
ULTRAFLO 1" Fuel Filter

AF-UF-FFE-10M
ULTRAFLO 10 Micron Filter Element Only

A-FLO



ULTRABLUE Nitrile Fuel Glove

- Jersey liner / Safety cuff offers extra protection
- Superior puncture, snag & abrasion resistance
- Resistant to oil, chemical & greases
- Sanitised anti-bacterial treated



AF-MX-AUB98XL
Safety Cuff Blue Nitrile - 3/4 Dipped

AF-MX-AUB131XL
Safety Cuff Blue Nitrile - Fully Dipped

A-FLO



Unitanks Self Bunded Oil/Diesel Tanks

- Complete with 4 entry ports, a level gauge & a leak detection sensor between the inner & outer skin
- Blow-moulded, high density polyethylene inner tank
- Forkliftable
- Base clamp brackets included



Bulky Item*

AF-EM-7620
620L Unitank (750L x 690W x 1651H)

AF-EM-7381
750L Unitank (1000L x 760W x 1370H)

AF-EM-7382
1000L Unitank (1100L x 705W x 1610H)

AF-EM-7539
1500L Unitank (1650L x 755W x 1870H)

POLYCUBE ECO

Lightweight, Portable
Diesel Storage Options

Diesel Ute Tanks with Standard Pump Kits



AF-FC-ECO100
100L Diesel Tank

with 12V Standard Pump Kit
800mm (L) x 757mm (W) x 450mm (H)
23kg



AF-FC-ECO200
200L Diesel Tank

with 12V Standard Pump Kit
1050mm (L) x 747mm (W) x 570mm (H)
35.8kg



AF-FC-ECO300-50
300L Diesel & 50L AdBlue Combo

with 12V Standard Diesel Pump Kit
& 12V Standard AdBlue Pump Kit
800mm (L) x 1100mm (W) x 700mm (H)
53kg



AF-FC-ECO500
500L Stumpy Diesel Tank

with 12V Standard Pump Kit
1720mm (L) x 760mm (W) x 760mm (H)
57.6kg

AF-FC-ECO1000
1000L Slimline Diesel Tank

with 12V Standard Pump Kit
1680mm (L) x 1130mm (W) x 860mm (H)
100kg



12V Standard Pump Kit
POLYCUBE ECO

SPECIFICATIONS

- Complete with a Standard 12V 35 LPM Pump with Battery Cable & Clips, 4m x 3/4" Diesel Delivery Hose & Auto Nozzle
- Ideal for back of utes or trucks to improve efficiency in refuelling your equipment
- Increased thickness of wall makes these POLYCUBE's strong & increases the lifespan
- Lockable lid
- Diesel & AdBlue Combo Tank comes complete with 12V Standard Diesel Pump & 12V Standard AdBlue Pump



AF-BS-SS5 BLUEQUIP Slimline Self Bunded Containerised AdBlue® Tank

Bluequip
Rotary Drum Pump Kit



- Heavy duty polypropylene construction
- 2m of delivery hose & stainless steel spout
- Complete with Bluequip adaptor to suit 205L drums
- Ideal for smaller 1-2 vehicle operations



AF-FP-332080
Rotary Action Barrel Pump Kit German & US Adaptor

Bluequip
Gravity Feed Kit



- Ideal for IBC applications where no electricity or air is available
- 4m of Bluequip delivery hose
- Manual nozzle with swivel
- IBC Adaptor Kit to suit standard IBC's



AF-FP-155170
IBC Gravity Feed Kit

Bluequip
Air Operated IBC Pump Kit



- Most cost effective pump system available for IBC's
- Reliable 2:1 Ratio Pump 40 LPM
- 4m of Bluequip Delivery Hose
- Pump Mount Bracket comes with bottom IBC Suction Kit
- Automatic Nozzle (standard)



AF-AE-KP21A
Bluequip IBC Kit, Auto Nozzle

AF-AE-KP21M
Bluequip IBC Kit, Manual Nozzle

Graco
Husky Diaphragm Pump



- Polypropylene body construction
- 1/4" Inlet/outlet connections
- Flow rates up to 57 LPM
- Ideal for transfer of AdBlue from one tank to another



AF-G-D5B911
Graco Husky 515 Plastic Pump

Ezi-Action
Drum Pump



- Output per stroke 20L 160mL
- Output per stroke 205L & 1000L 400mL
- Delivers on the up & down stroke
- Superior chemical resistance & anti-corrosion technology
- The only serviceable hand pump in the world, which acts to extend its lifespan



AF-EZ-25/5
25L Drum Pump

AF-EZ-205/55B
205L AdBlue Drum Pump

AF-EZ-1000/220
Ezi-Action 1000L IBC Drum Pump with 4 Adaptors

Bluequip
240V Electric Transfer Pump Only



- Flow Rate: up to 35 LPM
- 2m cable
- Reliable Self-Priming Pump
- 3/4" Inlet/Outlet hose tails included



AF-FP-203010
240V Electric Transfer Pump

RAASM
Diaphragm Pump



- Polypropylene body construction
- 1/2" Fluid inlet, 3/4" fluid outlet
- Flow rate up to 60 LPM
- 10 year warranty



AF-RA-2B3-16117EA5
RAASM 1/2" Diaphragm Pump EPDM Membrane

Bluequip
240V Submersible Pump



- Flow Rate: up to 40 LPM
- 5m cable
- Reliable Self-Priming Pump
- Multi Stage sub pump ideal for high pressure requirements or applications where pumping to multiple hoses / dispensers



AF-PPA-KP350-A-1
240V SS Submersible Pump only

AF-PPA-U55-3CS4-A1
240V SS Multistage Submersible Pump

Bluequip
12V Electric Pump



- 12V Self-Priming Pump
- Flow Rate: 35 LPM
- 205L Drum or 1000L IBC Suction Kits available
- Optional kits include: 6m x 3/4" Bluequip Hose & Manual Nozzle with Swivel



AF-FP-204000
Bluequip 12V Transfer Pump

Bluequip
Pro 240V Pump Kit



- The most common & sought after system in the market
- Stainless Steel IBC bracket with nozzle holder
- Self priming 35 LPM pump
- Digital flow meter
- 6m x 3/4" ID hose & automatic shut off nozzle
- Bottom suction kit



AF-FP-101320
240V 1000L IBC Kit with Auto Nozzle & Meter

PIUSI
Mobile Refilling Kit



- Specially designed for refilling AdBlue systems on diesel cars
- Comes with a universal connector to fit all car models
- The filling process is automatic & has an adjustable flow rate of 3-11 LPM



Bulky Item*

AF-FP-10020A
PIUSI Delphin Pro 240v Mobile Refilling Unit

Bluequip
Manual Nozzle



- Easy to use Polypropylene construction Gun
- 3/4" BSP(f) swivel inlet
- Flow Rate: up to 90 LPM
- Suitable for gravity feed applications



AF-AE-PPM90ADB
Bluequip Manual Dispense Gun

Bluequip
Genius Auto Nozzle

- Reliable, light, easy to handle & ergonomic
- Liquid compatible with AdBlue/DEF
- Inlet 1" BSP (m)
- Magnetic version



AF-FP-A10SS
Bluequip Genius Auto Nozzle (Suitable for Nozzle Holders)

Bluequip
Standard Stainless Steel Auto Nozzle

- Automatic AdBlue Nozzle
- Maximum flow rate: 60 LPM
- Suitable for urea & water
- Stainless steel body & spout with a plastic guard
- 3 position stay open latch
- Supplied with 3/4" hose barb swivel



AF-AE-PAX70ADB
SS Automatic Shut-off Nozzle

AF-AE-PAX70ADB M
SS Automatic Shut-off Nozzle with Magnet

Bluequip
K24 Inline Digital Flow Meter

- Flow rate: 6-120 LPM
- Face can be rotated 4 ways
- 1" M BSP Inlet/ Outlet c/w socket
- LCD electronic display
- Accuracy +/-1% after calibration



AF-FP-407010A
K24 Inline AdBlue Digital Flow Meter - 1"

Bluequip
Delivery Hose & Check Valve

- Great flexibility & kink resistant, even at low temperatures
- Outstanding chemical resistance
- Max. Working Pressure: 290PSI
- 1" inlet/outlet
- One way check valve



AF-FP-BQ20X1
Bluequip 20mm Hose

AF-FP-157490
Inline Check Valve Only

Bluequip
1000L IBC Cover

- IBC Cover ideal to protect & reduce impact of direct sunlight on AdBlue IBC's
- Easy to install & remove when required
- 240V Electric Pump Kit can be still mounted on side of IBC



AF-AE-IBCCOVER
1000L IBC Cover

Bluequip
Spring Retractable Hose Reel

- Increase operation efficiency, keep hoses maintained & work area clean
- Robust construction
- Fluid path compatible with AdBlue® fluid
- Heavy duty dual pedestal base



AF-AE-VGL1910ADB
Hose Reel 10M x 3/4" ID Hose

AF-AE-VGL1915ADB
Hose Reel 15M x 3/4" ID Hose

RAASM
436 Series Hose Reel

- Painted steel reel
- 10 bar
- 304 stainless steel swivel
- 1" inlet 3/4" outlet



AF-RA-8436.251
RAASM 436 Series AdBlue Reel - 10m x 3/4" Hose

AF-RA-8436.252
RAASM 436 Series AdBlue Reel - 15m x 3/4" Hose

POLYCUBE
AdBlue Ute Tank

- Complete with a Premium 12V 35 LPM Pump with Battery Cable & Clips, 4M x 3/4" Delivery Hose & Manual Nozzle
- Optional: Flow Meter
- Ideal for back of utes or truck to improve efficiency in refueling your equipment
- Increased thickness of wall makes these POLYCUBE's strong & increases the life span
- Built-in splash proof breather & lockable lid



Bulky Item*

AF-FC-100LAB
100L Slimline AdBlue POLYCUBE

AF-FC-200LAB
200L Slimline AdBlue POLYCUBE

Bluequip
AdBlue High Level Alarm

- Suitable for steel or plastic tanks
- Suitable with AdBlue
- Battery operated (battery supplied, type PP3 x1)
- Weatherproof to IP65
- Compact design for use in confined spaces
- High power alarm sounder 97dB at 1M



AF-HFE-HLA002
AdBlue High Level Alarm c/w Sensor & 5M Cable

BLUEQUIP
Dry Disconnect Bulk Delivery Fitting

- 316L stainless steel
- 2" BSP
- Tank unit male
- Hose unit female
- Dry break fitting



AF-LV-CH070-SEY01D
2" BSP Drybreak Hose Unit SS/Viton (Female)

AF-LV-CT070-SEZ01
2" BSP Drybreak Tank Unit SS/Viton (Male)

PIUSI
OCIO Level Indicator

- Continuous monitoring
- Indication in height, volume & filling percentage
- Maximum & minimum level alarms
- High accuracy
- Intuitive software managing procedure
- Easy installation
- PC linkup option



AF-FP-755140
OCIO Level Indicator LV/RS Output - AdBlue

LOXEAL
Thread Sealant

- High strength, fast curing anaerobic adhesive for locking & sealing fitted parts
- High viscosity & thixotropic effect allows larger tolerances
- Highly resistant to heat, corrosion, vibrations, water, gases, oils, hydrocarbons & many chemicals
- Must use activator with 85-86



AF-LX85-86 250
Loxreal 85-86 Thread Locking 250mL AdBlue

AF-LXAC11 200
Loxreal Activator 11



A-FLO

Industrial Grade Mini Sprayers

- Viton / EPDM Seals
- Heavy duty head & pump
- Automatic safety pressure valve
- Max pressure 1L (44Psi) & 1.5L(58Psi)
- Adjustable nozzles 0.8mm
- Ideal for solvent, brake & parts cleaner, tyre shine & degreaser



- AF-AP-3132PK**
1L Hand Held Sprayer Bottle
- AF-AP-3135PK**
1.5L Hand Held Sprayer Bottle



ULTRAFLO

Multi-Purpose Pumps

- Flow Rate: up to 20 LPM
- Available in Ryton or Polypropylene construction
- Ryton & Stainless Steel provide excellent chemical compatibility with lacquers, low viscosity chemicals & mild acids
- Polypropylene, Teflon & Stainless Steel offer excellent chemical resistance to herbicides, pesticides chemicals & mild detergents



- AF-AP-P490**
ULTRAFLO Level Action Polypropylene Pump
- AF-AP-RP90P**
ULTRAFLO Polypro Rotary Drum Pump - Yellow



ULTRAFLO

Water Control Valve

- A light weight Control Valve with rigid outlet
- An ideal Hose Reel Water Gun for workshop applications
- The ultimate choice for car & truck dealerships
- Manufactured in Europe



- AF-AN-26/CR**
ULTRAFLO Water Valve with 3/8" Connection
- AF-AN-27/CR**
ULTRAFLO Water Valve with 1/2" Connection



FUELSHOT

Slump Gun

- For use with concrete trucks or any other applications where high pressure water wash down is needed
- Robust, case hardened steel for extra strength needed in rugged applications



- AF-SG-1189**
FUELSHOT Slump Gun



ULTRAFLO

Heavy Duty Hot & Cold Wash Trigger Gun

- Spray pattern & water flow is easily controlled by the trigger action
- Suitable for flow rates up to 25 LPM
- Suitable for hot water up to 95°C
- Ideal for all types of commercial & industrial applications including restaurants, butchers, supermarkets, abattoirs, hotels etc



- AF-P-81004**
ULTRAFLO Dinger Water Gun



ULTRAFLO

Plastic Enclosed Air/Water Reel

- Manufactured in Europe
- Lightweight but robust enclosed casing
- Impact resistant, quality & high performance spring with longevity in mind
- Premium Hose with flexibility for great user experience



- AF-AM-8610**
Plastic Enclosed Air/Water Reel - 15m x 3/8"
- AF-AM-8612**
Plastic Enclosed Air/Water Reel - 15m x 1/2"



Statewide Oils - Workshop Fitout

RAASM
430 Series
Air/Water Hose Reel

- Roof, wall or bench mounted
- 0.6m Connection Hose
- 1/2" inlet (f) & outlet (m)
- 20 Bar swivel



- AF-RA-8430.103**
RAASM 430 Air Water Reel 10m x 1/2" ID Hose
- AF-RA-8430.104**
RAASM 430 Air Water Reel 15m x 1/2" ID Hose

RAASM
540 Series
Air/Water Hose Reel

- Roof, wall or bench mounted
- 0.6m Connection Hose
- 3/4" inlet (f) & outlet (m)
- 20 Bar swivel



Bulky Item*

- AF-RA-8540.101**
RAASM 540 Air Water Reel 10m x 3/4" ID Hose
- AF-RA-8540.102**
RAASM 540 Air Water Reel 15m x 3/4" ID Hose

RAASM
430 Series
Stainless Steel
Hose Reel

- Roof, wall or bench mounted
- Ideal for water wash down
- 1/2" inlet (f) & 3/8" outlet (f)
- 200Bar swivel
- Max. Water Temperature: 130°C
- Ideal for food industries
- Capacity: 15M x 1/2" or 18M x 3/8" Hose



- AF-RA-8434.300**
RAASM SS 430 Bare Reel (15M x 1/2" or 18M x 3/8" ID Hose Capacity)
- AF-RA-8424.300**
RAASM SS 430 Bare Reel - Swivel Bracket (15M x 1/2" or 18M x 3/8" ID Hose Capacity)

RAASM
540 & 560 Series
High Capacity
Stainless Steel Reel

- Roof, wall or bench mounted
- Ideal for water wash down
- 1" inlet/outlet (f)
- Ideal for food industries
- Capacity: 540 Series 30m x 1/2" or 15m x 1" or 20m x 3/4" ID Hose
- Capacity: 560 Series 30m x 1" or 40m x 3/4" ID Hose



Bulky Item*

- AF-RA-8542.100**
RAASM 540 Bare Reel - Brass Swivel Joint - 20Bar
- AF-RA-8544.200**
RAASM 540 Bare Reel - Brass Swivel Joint - 100Bar
- AF-RA-8564.200**
RAASM 560 Bare Reel - Brass Swivel Joint - SS Swivel Joint - 100Bar

RAASM
530 Series
Stainless Steel Manual
Air/Water Bare Reel

- Wall or bench mounted
- Capacity: 25m x 1/2" hose
- Pressure Rating: 20Bar
- 1/2" inlet & outlet (f)
- Suitable for air & water
- Brass swivel joint
- Ideal for workshop installation



- AF-RA-75320.100**
RAASM 530 Series SS Manual Air/Water Bare Reel without Hose Guide
- AF-RA-753401**
RAASM 530 Series SS Manual Reel Hose Guide including Holding Arm

ULTRAFLO
High Pressure Hot
Wash Hose Reel

- Ideal for pressure wash applications where high pressure rating are critical
- Suitable for hot water up to 150°C max
- 440Bar / 5600PSI pressure rating
- Stainless Steel Reels are made of SS Type AISI 304



- AF-AE-VL4H3820ST**
VL Series HP Reel - Bare (20m x 3/8" ID Hose Capacity)
- AF-AE-VX4H3815ST**
VX Series Stainless Steel HP Reel - Bare (15m x 3/8" ID Hose Capacity)

RAASM
430 Series
Manual Oil
Bare Reel

- Wall or bench mounted
- Capacity: 15m x 1/2" hose
- Pressure Rating: 150Bar
- 1/2" inlet & outlet (f)
- Ideal for workshop installation



- AF-RA-74300.400**
RAASM 430 Series Manual Oil Bare Reel without Hose Guide

- AF-RA-743001**
RAASM 430 Series Manual Reel Hose Guide including Holding Arm

- AF-RA-74301.400**
RAASM 430 Series Manual Oil Bare Reel with Hose Guide

RAASM
540 Series
Manual Air/Water
Bare Reel

- Wall or bench mounted
- Capacity: 15m x 1" hose
- Pressure Rating: 20Bar
- 1" inlet & outlet (f)
- Suitable for air, water & diesel
- Brass swivel joint
- Ideal for workshop installation



Bulky Item*

- AF-RA-75400.100**
RAASM 540 Series Manual Air/Water Bare Reel without Hose Guide

- AF-RA-754001**
RAASM 540 Series Manual Reel with Hose Guide including Holding Arm

- AF-RA-75401.100**
RAASM 540 Series Manual Air/Water Bare Reel with Hose Guide

RAASM
530 Series
Manual Air/Water
Bare Reel

- Wall or bench mounted
- Capacity: 25m x 1/2" hose
- Pressure Rating: 20Bar
- 1/2" inlet & outlet (f)
- Suitable for air & water
- Brass swivel joint
- Ideal for workshop installation



- AF-RA-75300.100**
RAASM 530 Series Air/Water Bare Reel without Hose Guide

- AF-RA-753001**
RAASM 530 Series Manual Reel Hose Guide including Holding Arm

- AF-RA-75301.100**
RAASM 530 Series Manual Air/Water Bare Reel with Hose Guide

RAASM
560 Series
Manual Air/Water
Bare Reel

- Wall or bench mounted
- Capacity: 30m x 1" hose
- Pressure Rating: 20Bar
- 1" inlet & outlet (f)
- Suitable for air, water & diesel
- Brass swivel joint
- Ideal for workshop installation



Bulky Item*

- AF-RA-75600.100**
RAASM 560 Series Manual Air/Water Bare Reel without Hose Guide

- AF-RA-756001**
RAASM 560 Series Manual Reel Hose Guide including Holding Arm

- AF-RA-75601.100**
RAASM 560 Series Manual Air/Water Bare Reel with Hose Guide

RAASM
240V Electric
Cable Reel

- 10 amp 240v x 15m x 34 x 1.5mm Cable
- Inlet cable 1.3m x 34 x 1.5m
- Working temperature: -5°C to +40°C
- Fitted with thermal protector
- IP44 Rated
- Can be used indoors & outdoors (under cover only)
- RCM Electrical Approval incl. A1
- AS/NZS 3105:2014
- Unreeled: 2300w (10 amp)
- Coiled: 1200w (5 amp)
- Comes fitted with swiveling bracket



- AF-RA-2315SFA**
RAASM 240V Electric Cable Reel 10 amp 240v x 15m



ULTRAFLO

Economy Hand Trolley

- Enables easy & convenient means moving 20L to 60L drums around a workshop
- Includes two rubber wheels & a drum locking device



AF-AP-1300
20L Hand Drum Trolley

ULTRAFLO

Heavy Duty Hand Trolley

- Sturdy drum trolley suitable for both oil & grease drum 20L to 60L
- Complete with chain for holding drum in place



AF-AP-1303
Heavy Duty Hand Trolley 18-60kg Drums

ULTRAFLO

Heavy Duty 205L Oil Drum Trolley

- 3 Wheel low level drum trolley
- Suitable for both oil & grease drums (205L or 180kg)
- Solid rubber tyres with rear swivel & locking brake
- Chain to secure drum
- Pump or hose reel can be fitted using optional brackets



AF-AP-1305
HD 3 Wheel Drum Trolley 180kg - 205L Drums

AF-AP-1306
HD 4 Wheel Drum Trolley 180kg - 205L Drums

ULTRAFLO

Drum Dollies

- Provides effective means of moving drums throughout the workshop
- Industrial quality steel construction with heavy duty casters
- Gives increased mobility & reduces physical effort & drum handling
- OHS friendly



AF-AP-4325
HD 20L - 20kg Drum Dolly

AF-AP-3325
HD 60L - 60kg Drum Dolly

AF-AP-2325
HD 205L - 180kg Drum Dolly

ULTRAFLO

LL Series 205L Drum Spill Pallets

- Designed for temporary or secondary storage & to improve workplace safety, housekeeping & protection of the environment
- Economical & light-weight but tough & durable
- Convenient as easy forklift access points ensures portability
- 2 Drum weight & dimensions: 19kg, 700mm (L) x 1300mm (W) x 300mm (H)
- 4 Drum weight & dimensions: 36kg, 1300mm (L) x 1300mm (W) x 300mm (H)



AF-SC-205LL2D
ULTRAFLO LL Series Poly 2 Drum Spill Pallet

AF-SC-205LL4D
ULTRAFLO LL Series Poly 4 Drum Spill Pallet

ULTRAFLO

LL Series 1000L IBC Spill Pallets

- Cost effective & space saving solution without compromising quality
- Single IBC Bund capacity: 1200L
- Dual IBC Bund Capacity: 1800L
- Single IBC Spill Pallet weight & dimensions: 80kg, 1680mm (L) x 1680mm (W) x 750mm (H)
- Dual IBC Spill Pallet weight & dimensions: 110kg, 1300mm (L) x 2340mm (W) x 750mm (H)



AF-SC-1IBCLL
ULTRAFLO LL Series Poly Single IBC Spill Pallet

AF-SC-2IBCLL
ULTRAFLO LL Series Poly Dual IBC Spill Pallet

K&S Freighters - Workshop Fitout

LOXEAL
Liquid Adhesive

- Anaerobic adhesive, fast curing, medium strength thread sealant for metal joints
- Replaces PTFE tape & yarn
- Provides instant sealing against low pressure or against high pressure within 1 hour
- Seals against gas, air, water, LPG, hydrocarbons, oils & many chemicals including refrigerants



AF-LX58-10 100
Loxéal 58-10 Thread Sealing 100mL

ULTRAFLO
Drum Wrench

- Industrial grade bronze alloy drum wrench
- Designed to fit into most 2" & 3/4" drum plugs
- Wrench is hardened & tempered for increased strength
- Compact design for easy storage



AF-AP-2315
ULTRAFLO Drum Wrench

A-FLO
205L-180kg Drum Cradle

- For ease of moving, safe storage & efficient decanting of 205L drums
- Ideal for workshops & other industrial environments
- HD construction with maximum capacity of 495kg
- Lifting handle also included



AF-AP-7425-2
HD 205L-180kg Drum Cradle

A-FLO
Oil & Fuel Pads

- Perforated along the centre allowing them to be easily divided so you can get the right size pad for the spill & assist in placing in smaller & confined spaces.
- 200GSM (Pack of 200)
- 300GSM (Pack of 100)
- 410 x 460mm



AF-SC-60020P
200GSM Oil & Fuel Pads

AF-SC-50020P
300GSM Oil & Fuel Pads

A-FLO
40L Spill Kits

- 40L Kits are in a compact hi-vis bag, small enough to store in truck cabins, toolboxes, behind a door or in laboratory cupboards
- Available in General Purpose or Oil & Fuel Spill Options
- Refill kits available



AF-SC-40LGSK
General Purpose Spill Kit

AF-SC-40LOSK
40L Oil & Fuel Spill Kit

A-FLO
Large Oil & Fuel Spill Kits

- 120L & 240L Bins are the best available in terms of capacity & fast response
- Refill kits available



AF-SC-120B-OFSK
120L Budget Oil & Fuel Spill Kit*

AF-SC-240B-OFSK
240L Budget Oil & Fuel Spill Kit*

A-FLO EQUIPMENT WARRANTY & RETURNS POLICY

W Warranty

Your A-FLO Equipment supplied product is warranted to the original user against defects in workmanship or materials under normal use for a period of 12 months and RAASM 10 year after purchase date. Any products which are deemed to be defective in material and workmanship and are returned to A-FLO Equipment will be repaired or replaced at A-FLO Equipment's discretion.

The warranty does not cover damage or failure which A-FLO Equipment decides has arisen from misuse, abrasion, corrosion, negligence, accidental damage, faulty installation or tampering. If an inspection by A-FLO Equipment discloses no defect in material or workmanship, repair or replacement will be made at customary charges.

A-FLO Equipment has made a diligent effort to accurately illustrate and describe its products in all its literature. However, such illustrations and descriptions are not a warranty.

The purchaser shall give written notice of any claim to A-FLO Equipment within ten days after discovery of any alleged defect.

Shipping cost will only be credited by A-FLO Equipment if the product is deemed valid of warranty. Return shipping costs will be charged if the product does not meet conditions of warranty.

A-FLO Equipment will not be liable for consequential damages, losses, delays, labour costs or any other expense directly or indirectly arising from use of the product, its liability being expressly limited to the replacement or repair of any defective product or an allowance of credit therefore, the remedy and recovery of the purchaser on any claim against A-FLO Equipment, whether based on contract of this warranty or any alleged negligence shall be as stated and limited herein and shall be exclusive.

C Conditions Of Sale

- All prices shown do not include GST or freight.
- Orders may incur a delivery charge which will be notified at time of order.
- All prices are subject to change without notice.
- All orders are subject to A-FLO Equipment Terms of Trade (available on request).
- Errors and Omissions excepted

G Goods Return Policy

- Returns are subject to A-FLO Equipment discretionary 20% restocking fee and will only be accepted if the goods are received in an unused, in original packaging and condition in which the goods were received.
- Return of incorrectly supplied goods at A-FLO Equipment expense will be the carrier of our choice. We will not accept freight charges for goods returned by other means.
- Products specially purchased, manufactured, machined or cut to size to the customer's specifications are non-returnable.

DISCLAIMER: Although every care is taken to ensure accuracy and completeness in compiling this data no liability can be accepted by A-FLO Equipment Pty Ltd for damage or loss caused by any errors or omissions in the information given, either directly or indirectly. Suitability of products referred to in this catalogue is the customers sole responsibility. Always refer to technical data to confirm suitability which is available on request from A-FLO Equipment Pty Ltd. E & O E.



For more information, call our team
or scan the QR code to visit our website



For more info, visit:
aflo.com.au/contact



**SHOP
ONLINE**

Scan the QR code, or visit
aflo.com.au/login



K&S Freighters - Workshop Fitout

MAKING EVERY DROP COUNT